

Selected work of
ID#100



01 THE VOID



02 BET THE FARM



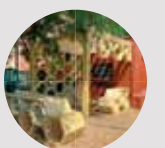
03 THE SPLASH



04 A CITY SECRET



05 HUMAN SCALE

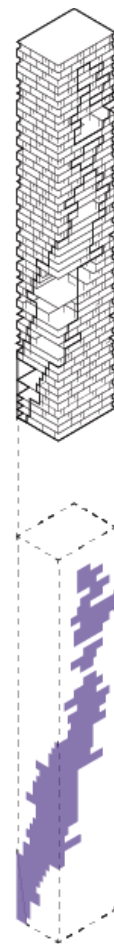


01

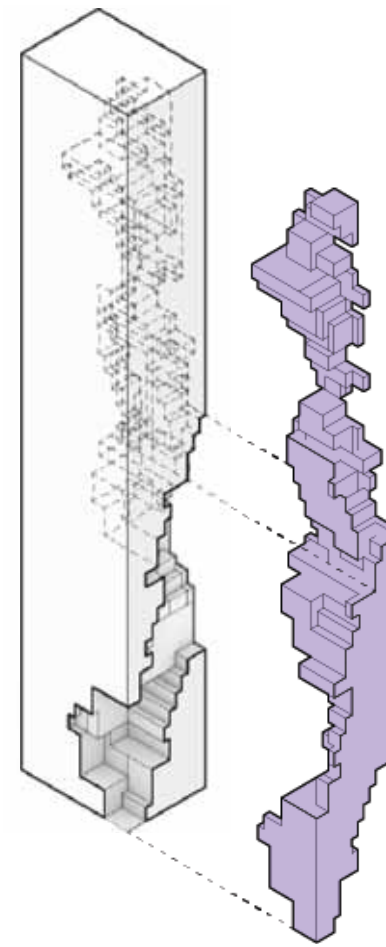
THE VOID

Mixed-use building for a void breaking through a modular grid to unify encapsulation resulting in communal spaces. The subtraction from a modular grid to create a communal spaces that unifies the encapsulated form. Amenities are spread out vertically from west to east creating the void. The void connects the ammenities throughout the building, recessed in to optimize sunlight and natural ventilation. The continuity of void breaks the encapsulation as well as sculpting the form in harmony. Each facade of the building responds to solar conditions. The proportion of solid and void in the building refreshes the urban context with nature. Open balconies and communal gardens provide meeting points for collarboration and socializing in a relaxed and natural setting.

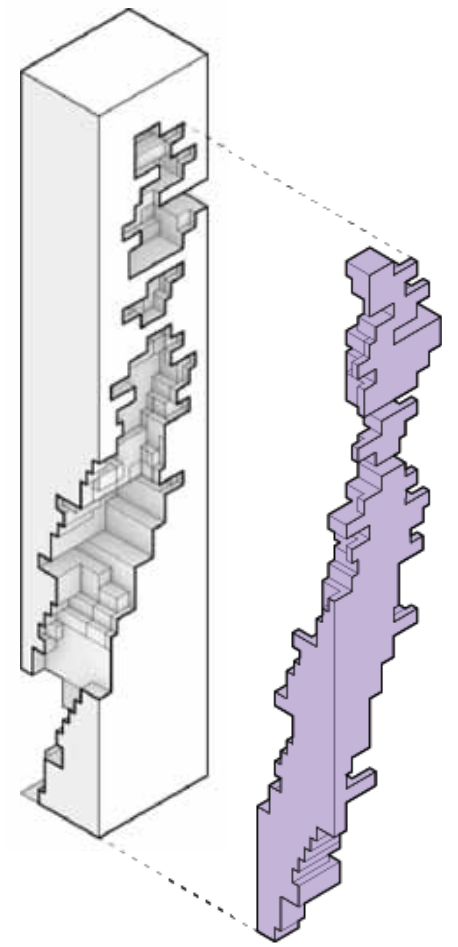




Creating void out of form



South west



South east



Site as grid



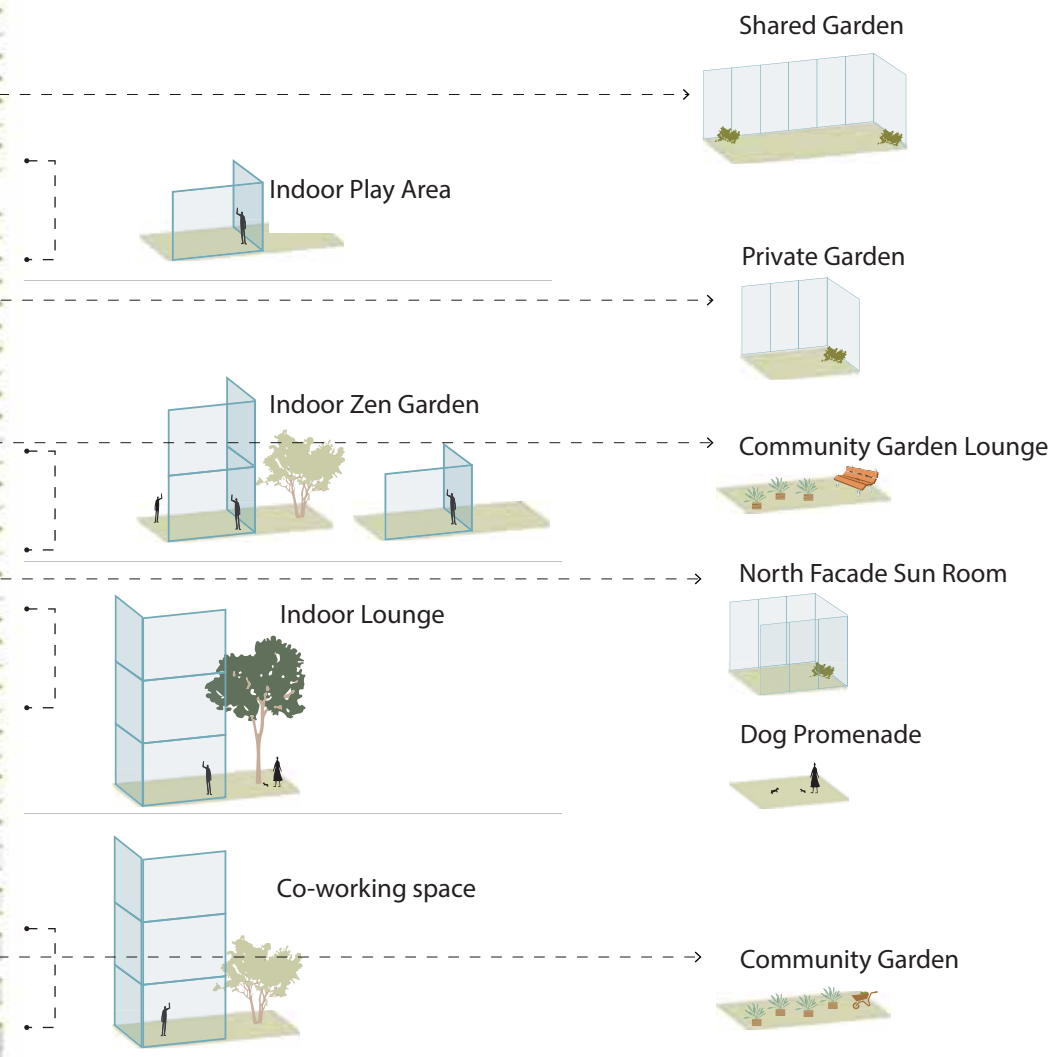
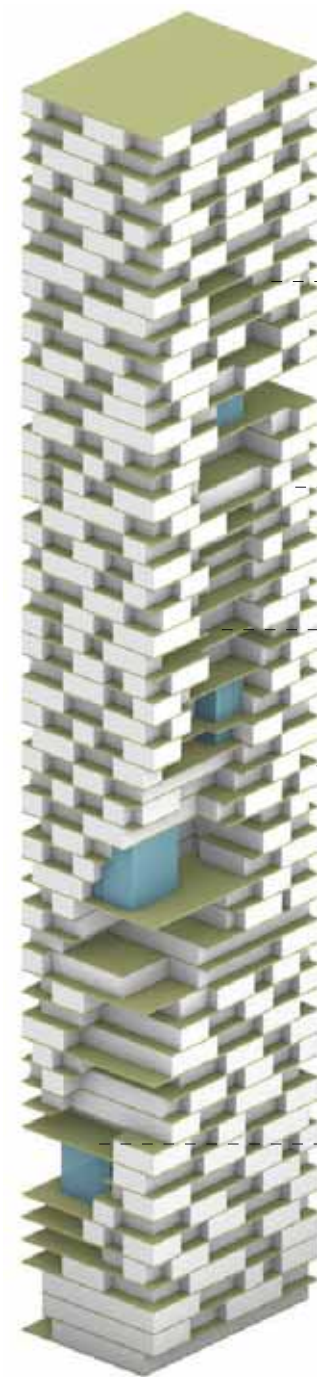
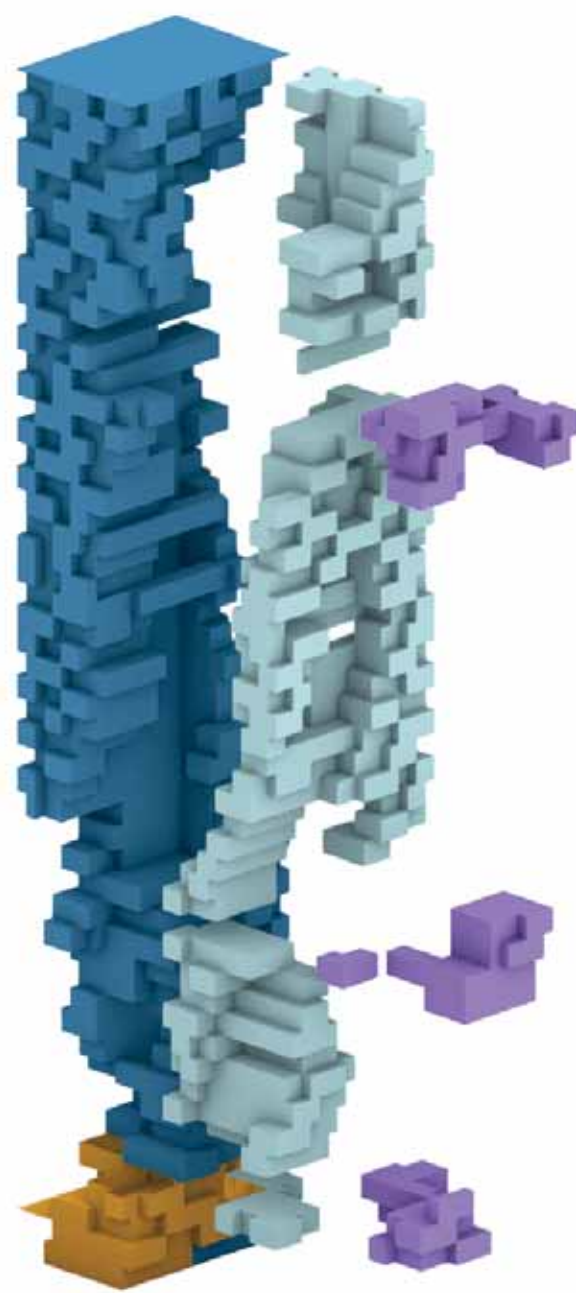
Vertical Extrusion



Extruding in and out of modular grid



- Amenities
- Apartment
- Hostels
- Commercial





Level 22

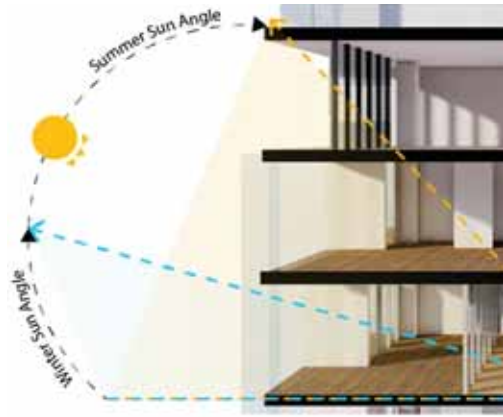


Level 21

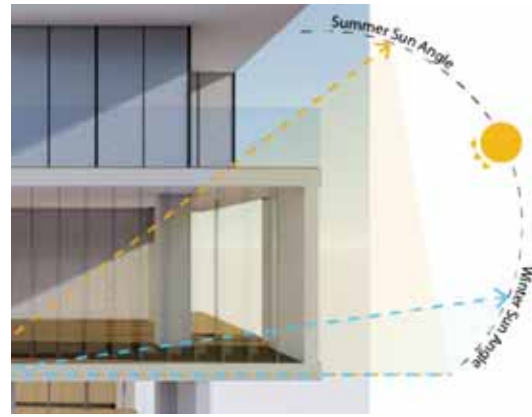


Level 20

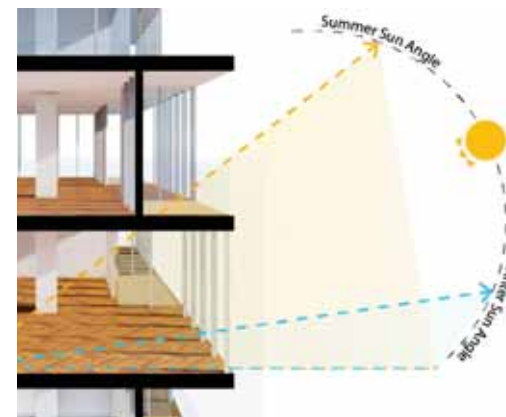




Vertical Louvers (West)



Shading Extrusion (South)



Shading Extrusion (East)



Double Thermal Barrier (North)



West Elevation



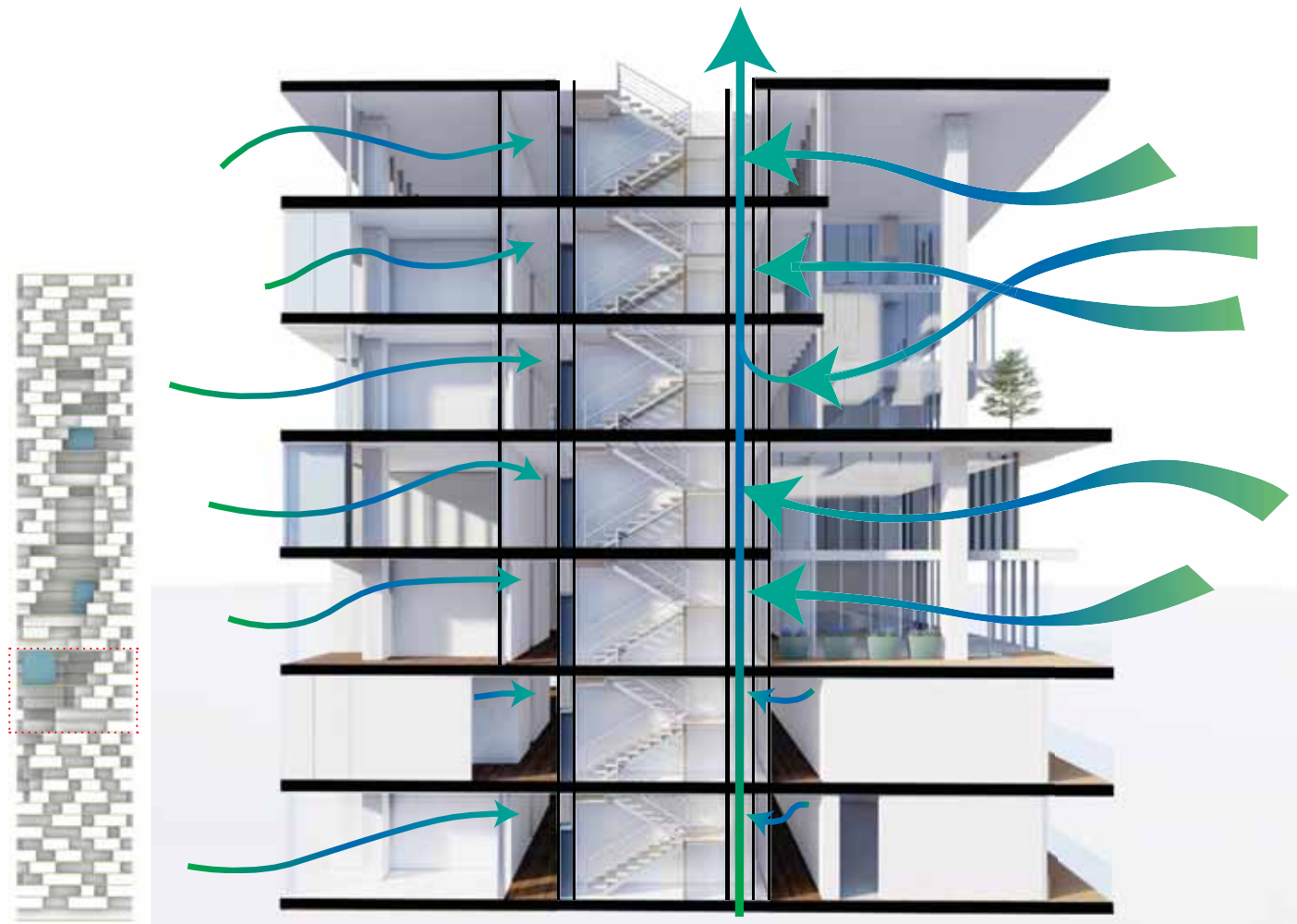
South Elevation



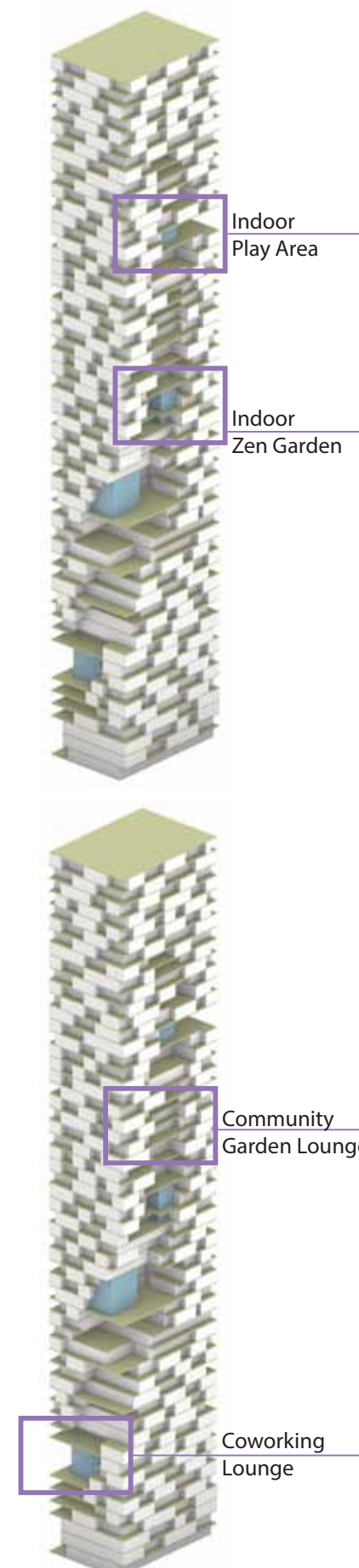
East Elevation



North Elevation



Wind diagram
Air shaft through the building core

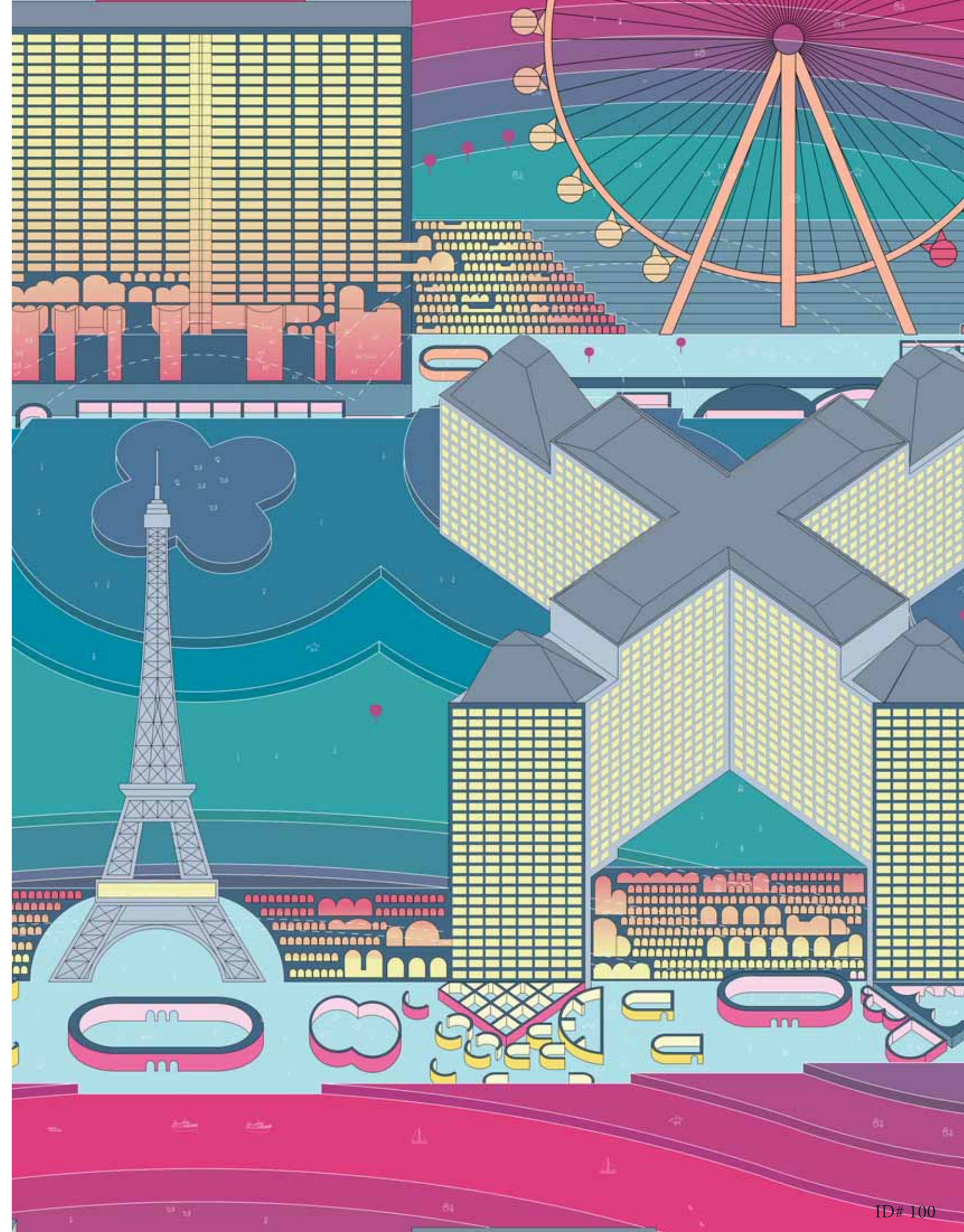




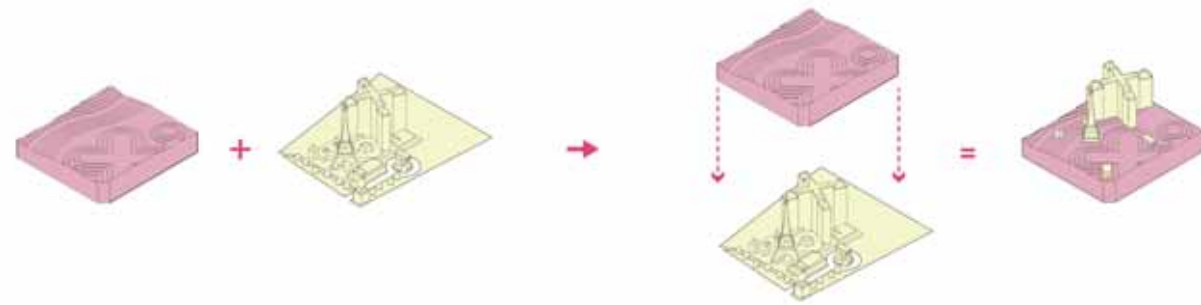
02

BET THE FARM

Engages the programmatic possibilities and formal exploration of invented large-scale architecture in the city. Programs are pushed beyond logical possibilities. Hybridization of invented program and existing lifestyles will co-exist. Growth of ecologically based systems will be deployed through manipulation of formal uniqueness and reinforcement in the patterns of urban behavior. New forms of collective associations will arise within a contrary hypothesis of : What if Las Vegas expanded its endless interiors even more? What if Las Vegas leveraged its current gambling culture and lifestyles with rural farming lifestyles? After all, farming is considered a gamble. Then Las Vegas could host a new agricultural set of lifestyles while supporting its existing lifestyles. New associations between gamblers and farmers, dealers and townsfolk, and more are possible.



What if Las Vegas expanded its endless interiors even more? What if Las Vegas leveraged its current gambling culture and lifestyles with rural farming lifestyles? After all, farming is considered a gamble.



Then Las Vegas could host a new agricultural set of lifestyles while supporting its existing lifestyles. New associations between gamblers and farmers, dealers and townfolk, and more are possible.



FARMER + GAMBLER



Their lifestyles would consist of gambling vegetable and fruits while seed trading. Host competition for best quality of crop and auction for vegetation products.

MIGRANT WORKER + TOURIST

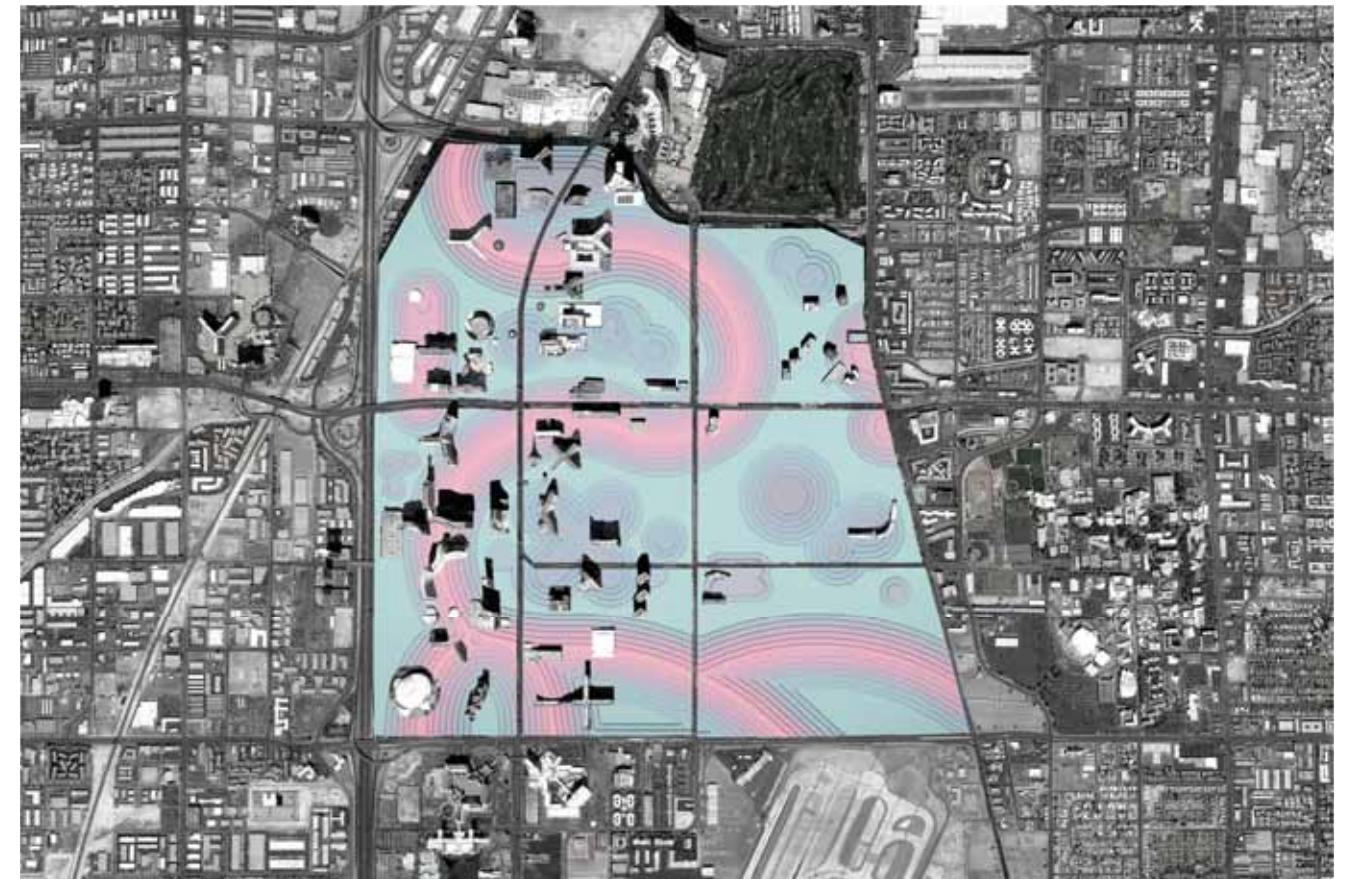


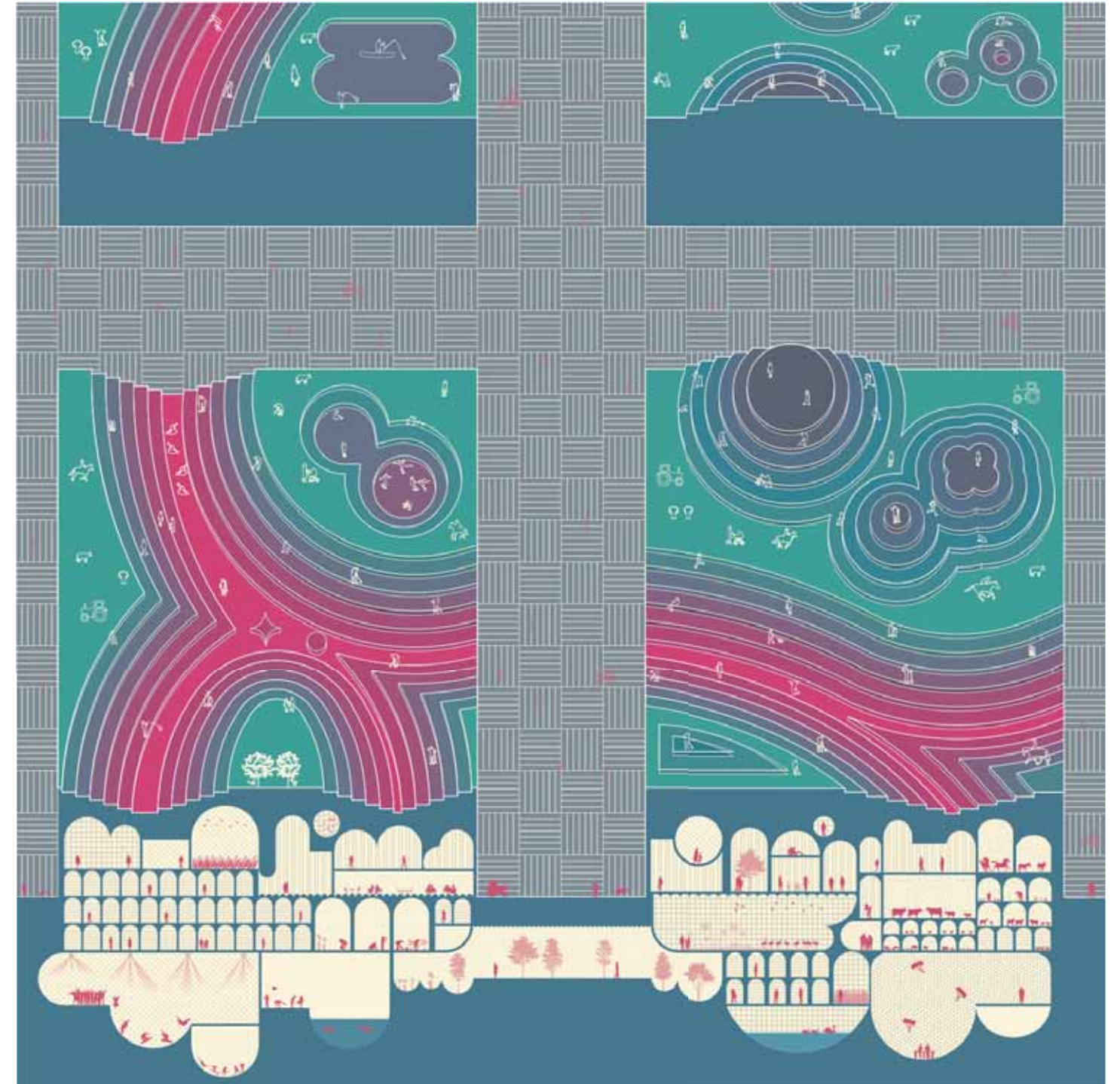
Since they both come and go, what if tourists come to the farm for a few days and then leave. There would be temporary community farming services, exchange agricultural cultures and test various kinds of food.

RANCHER + HOTELIER



They would tend to hotel rooms and tend to livestock. Both would make sure each lifestyle is co-existing comfortably by managing transitions between each lifestyles.





Plan Section Oblique
Proposal



Plan Section Oblique
Megastructure over Las Vegas' The Strip

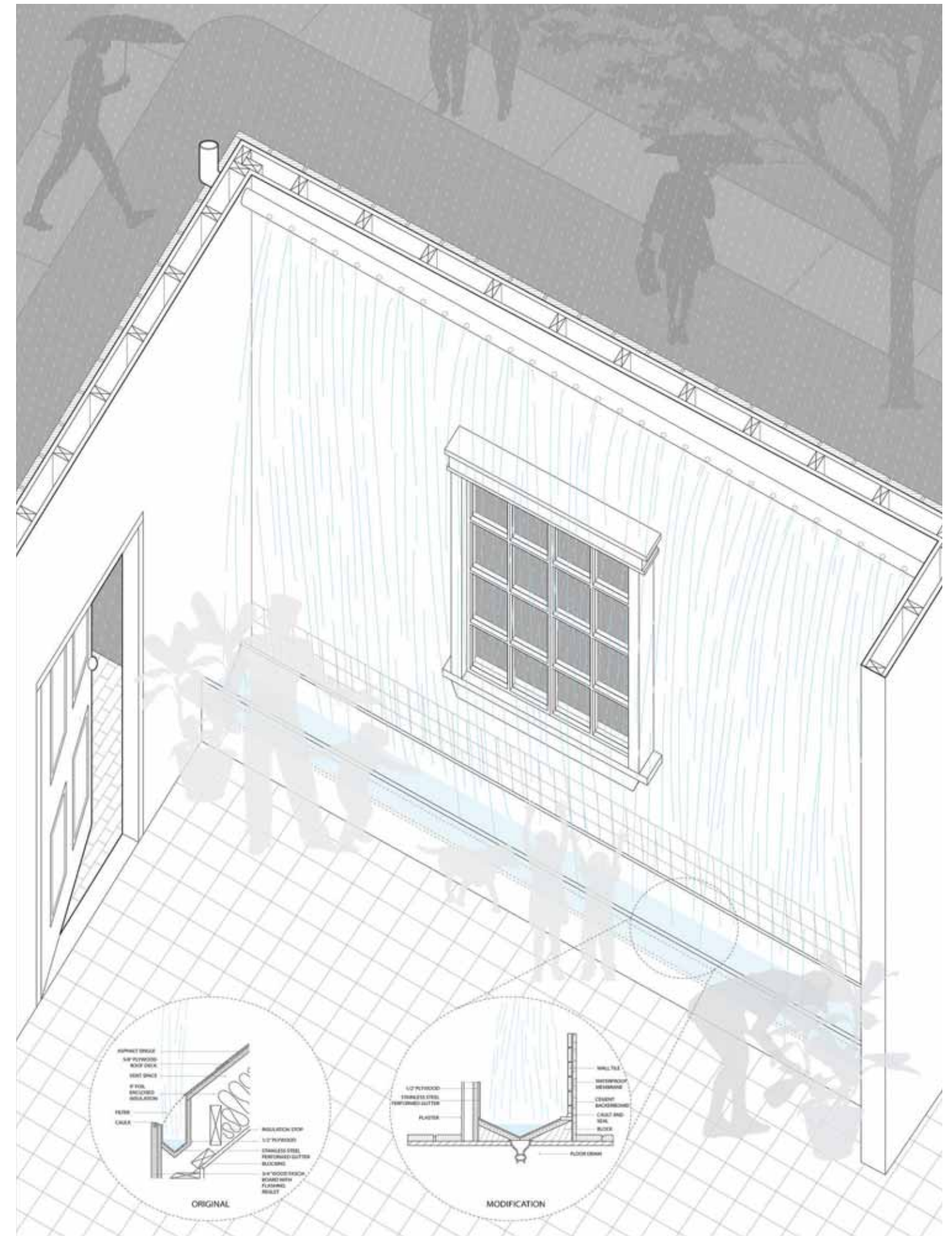


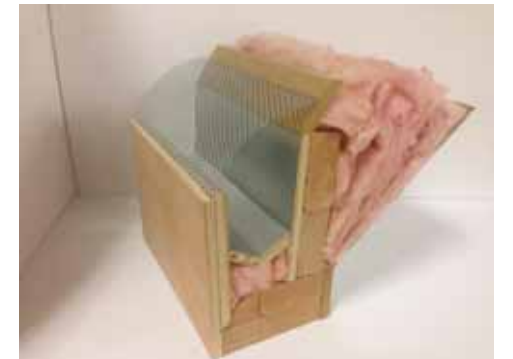
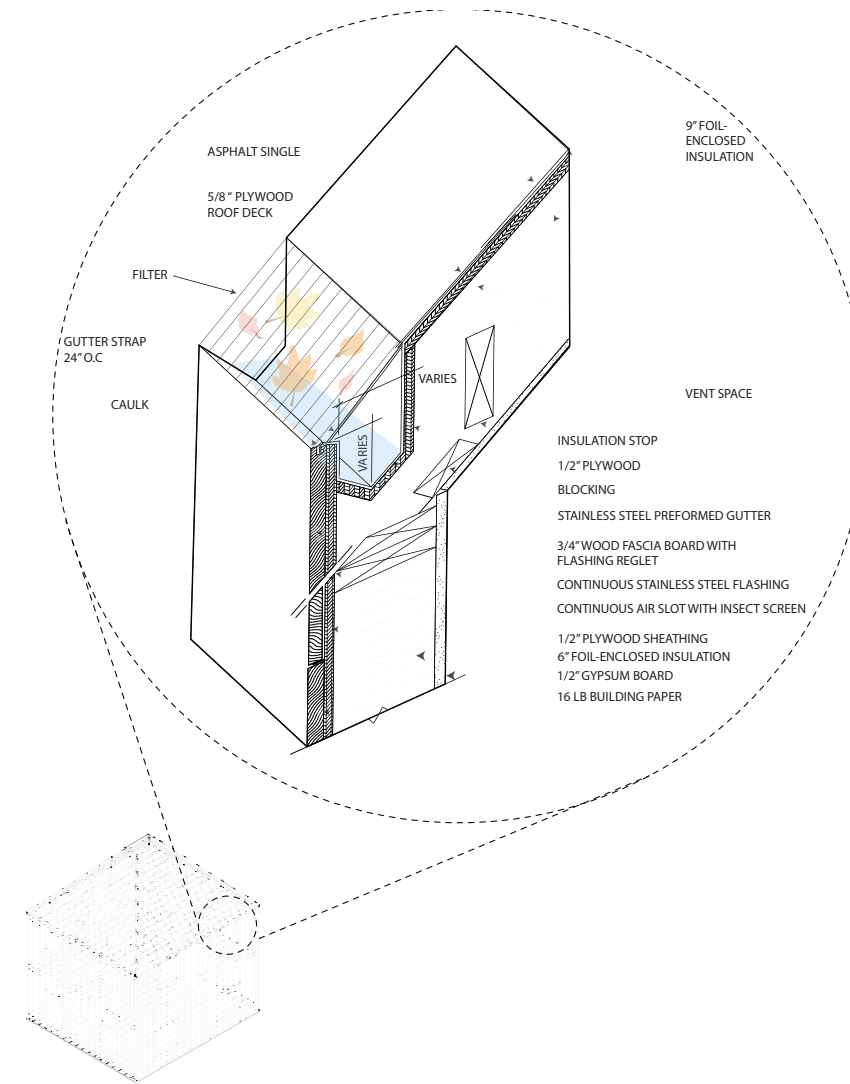
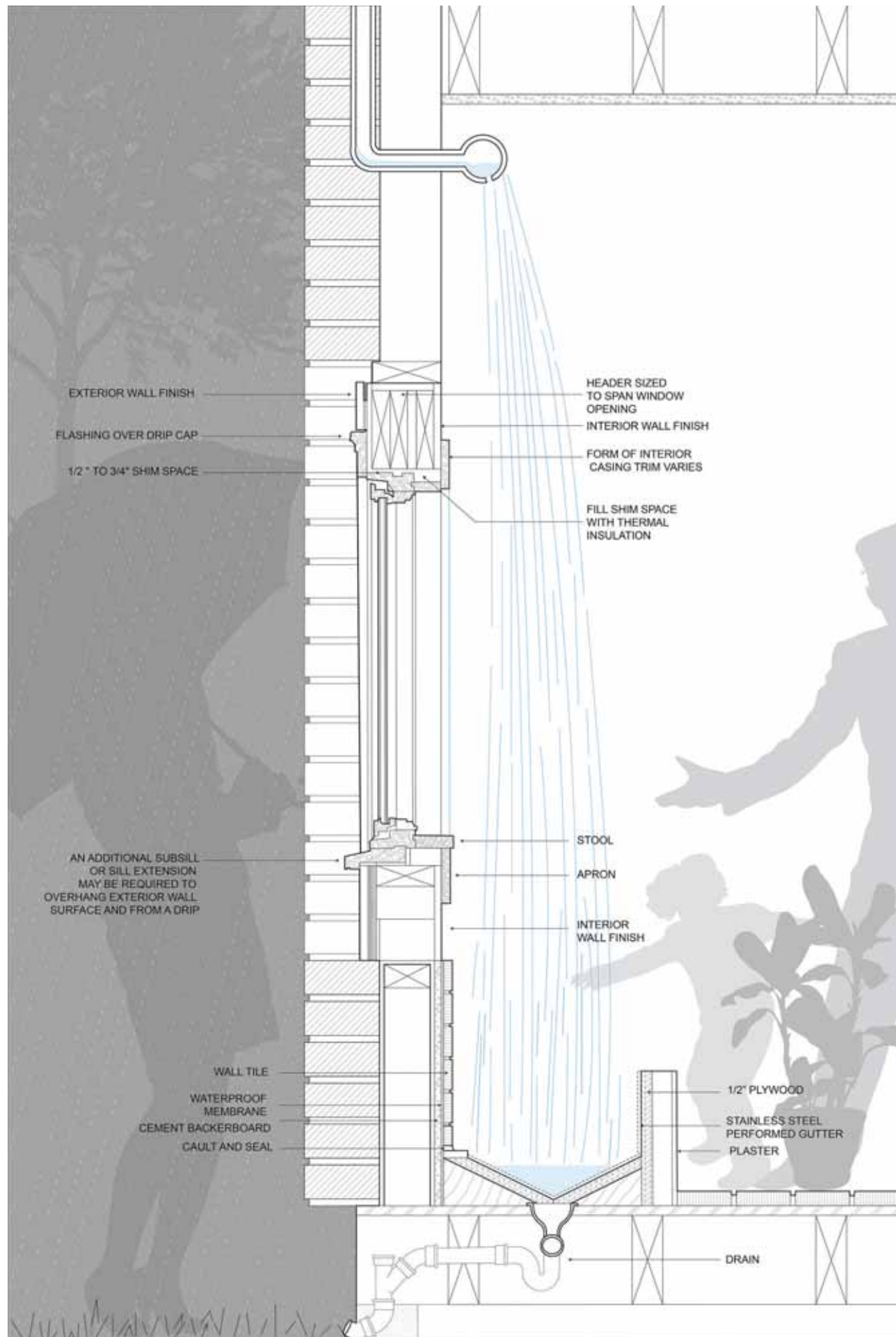
Zoomed-in Areas

03

THE SPLASH

Focuses on how a small detail can create a big spatial and social impact by addressing principles of materiality, construction and modules. Rather than having a gutter channel around the exterior of a typical house, the gutter water route is intentionally guided inside the house. The modification allows rainwater to be received internally through the drilled holes to create water wall. The water leaves the house through the collective vent of drain. The effect of my modification allows the family members to experience rainwater without having to step outside. Another effect it has during rain is that it acts like a semitransparent curtain where it creates a blurred vision when one look through the window to either outside or to the inside.





Gutter construction detail

1:1 Scale Gutter Physical Model

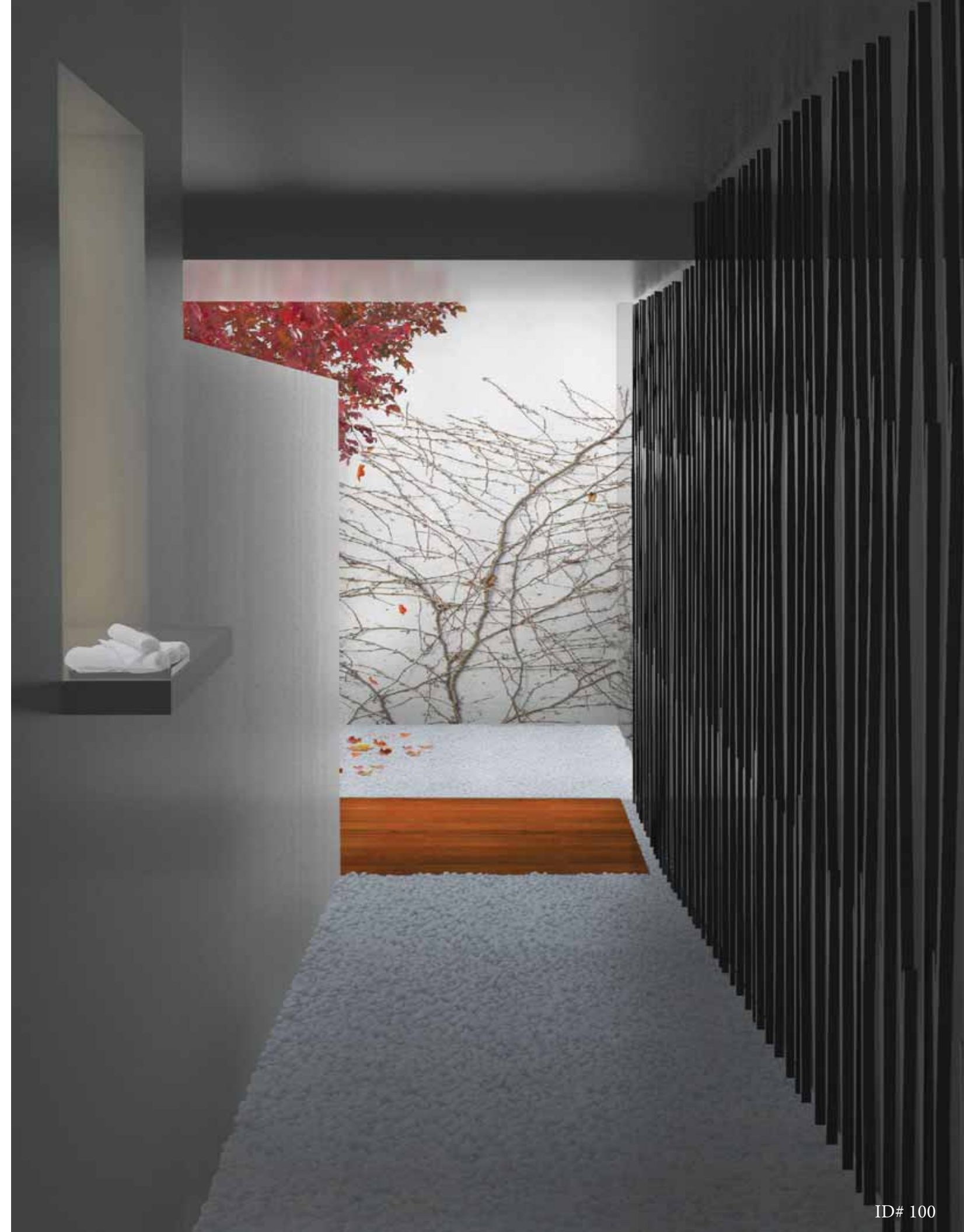


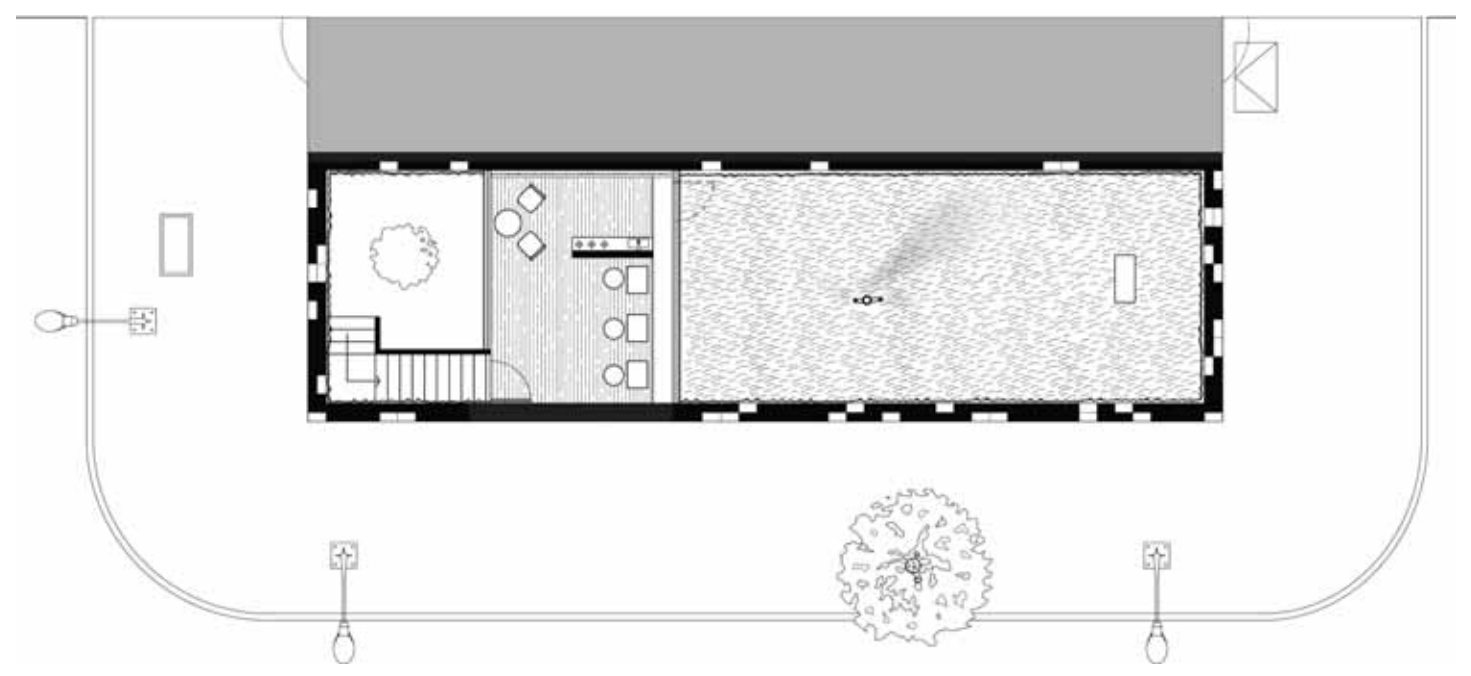
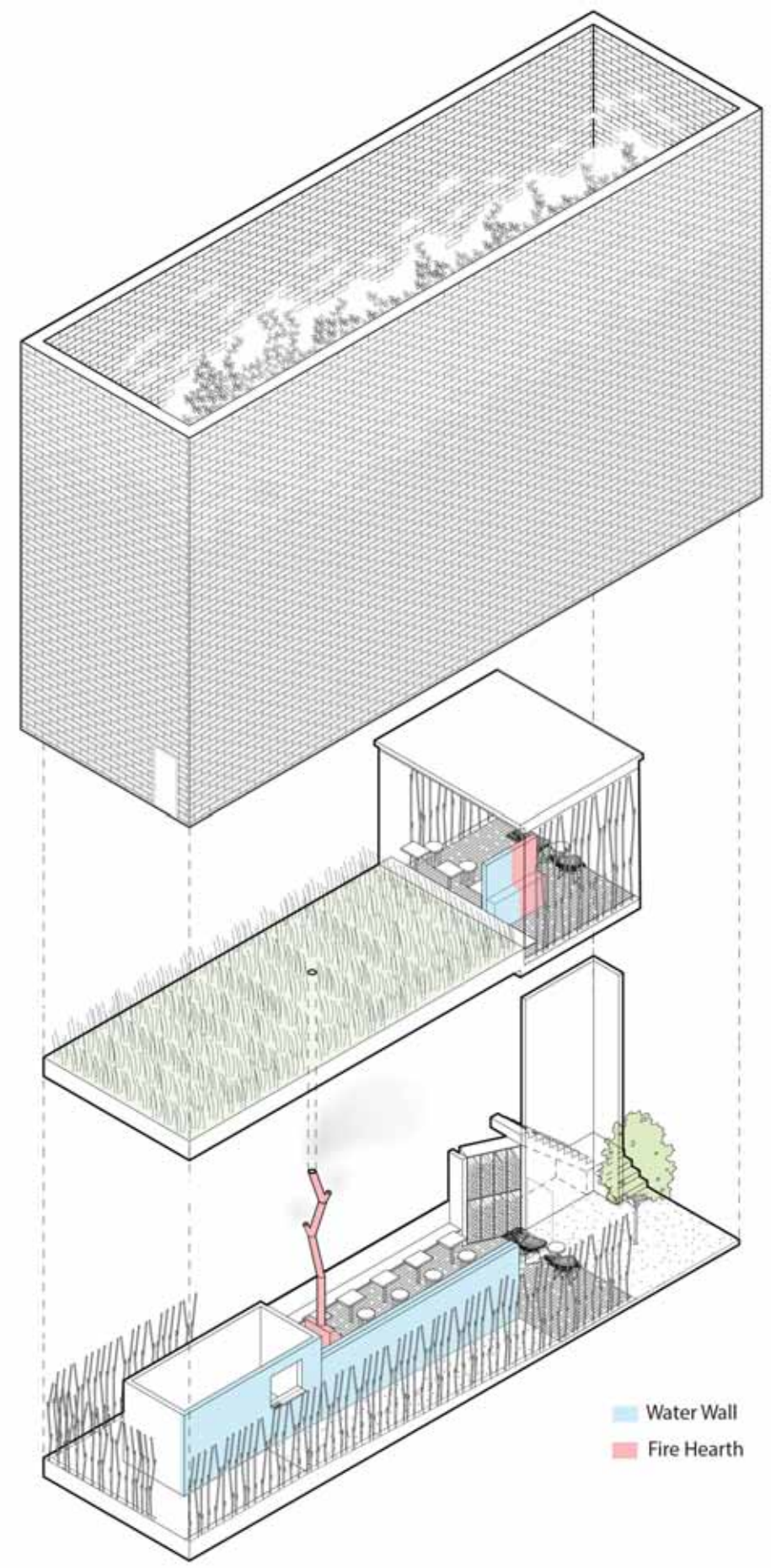
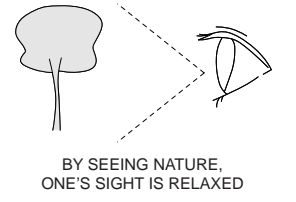
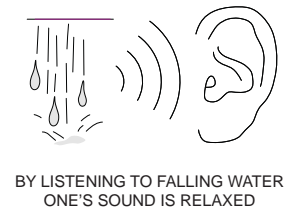
Physical model of water wall

04

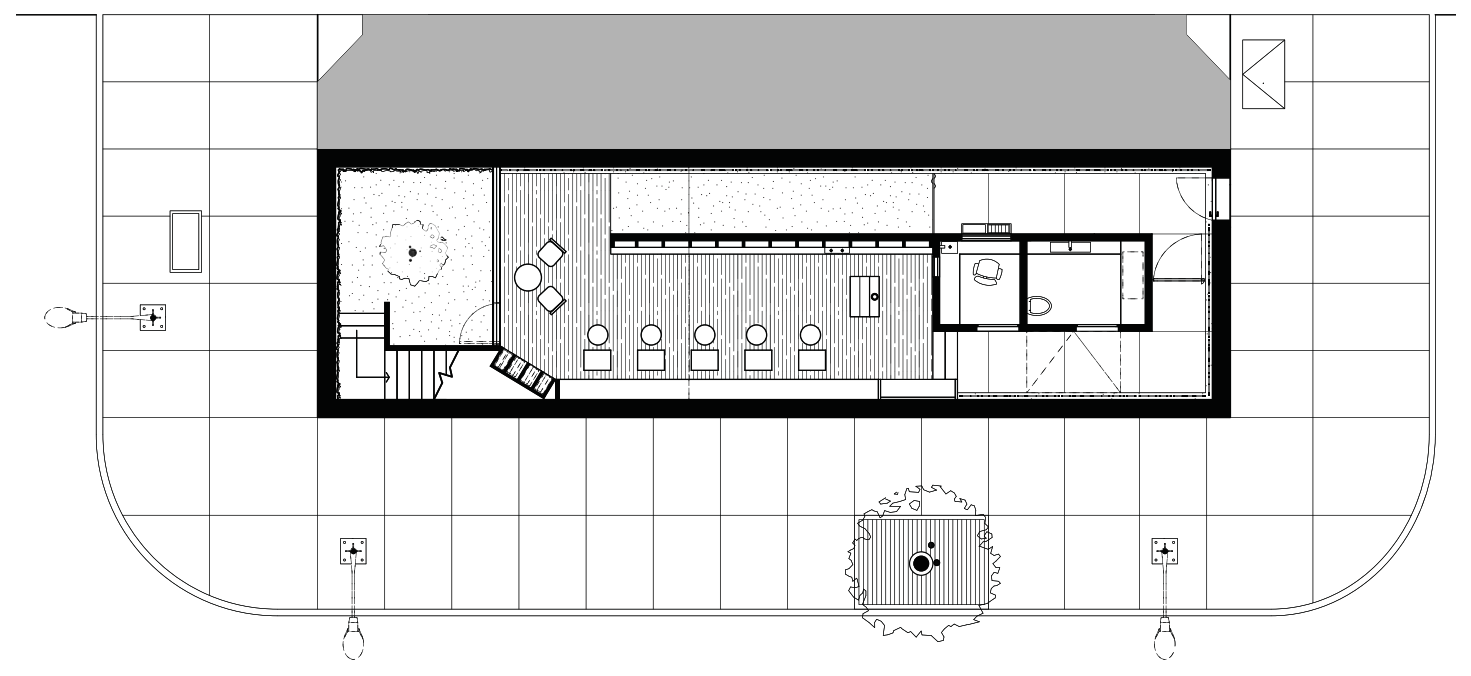
A CITY SECRET

Gives an abandoned site to have a heartbeat through focus of five senses. Site covers 1314 square feet and is located at West Congress Parkway and South Dearborn Street. It is categorized as one of the most exposed and historic sites in Chicago, which it is currently, overlooked by-product of urbanism. Due to its congested location, the goal was to create a sanctuary that can express peacefulness and poetic character. After discovering personal touchstone, the new program consists of inspiration from nature and utilization of tea to give city dwellers and visitors a place to feel calm and refreshed.





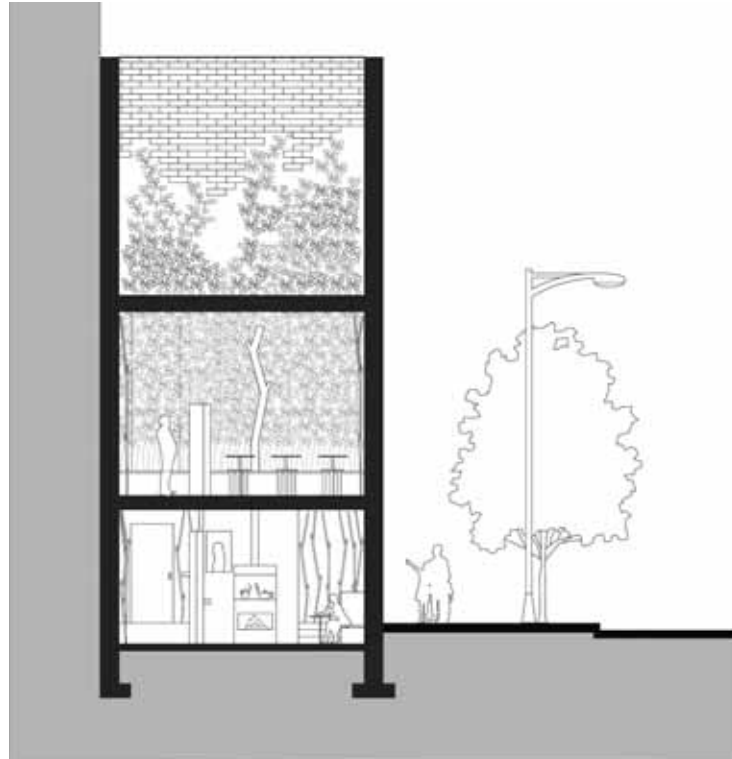
Mezzanine Floor Plan



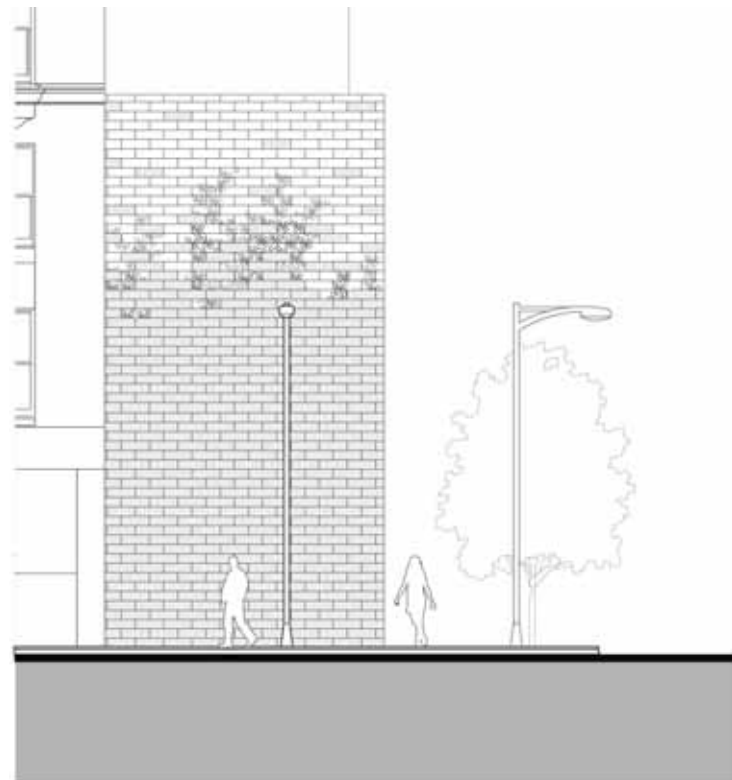
First Floor Plan



Section



Sectional Perspective



Glass brick facade



Physical Study Model



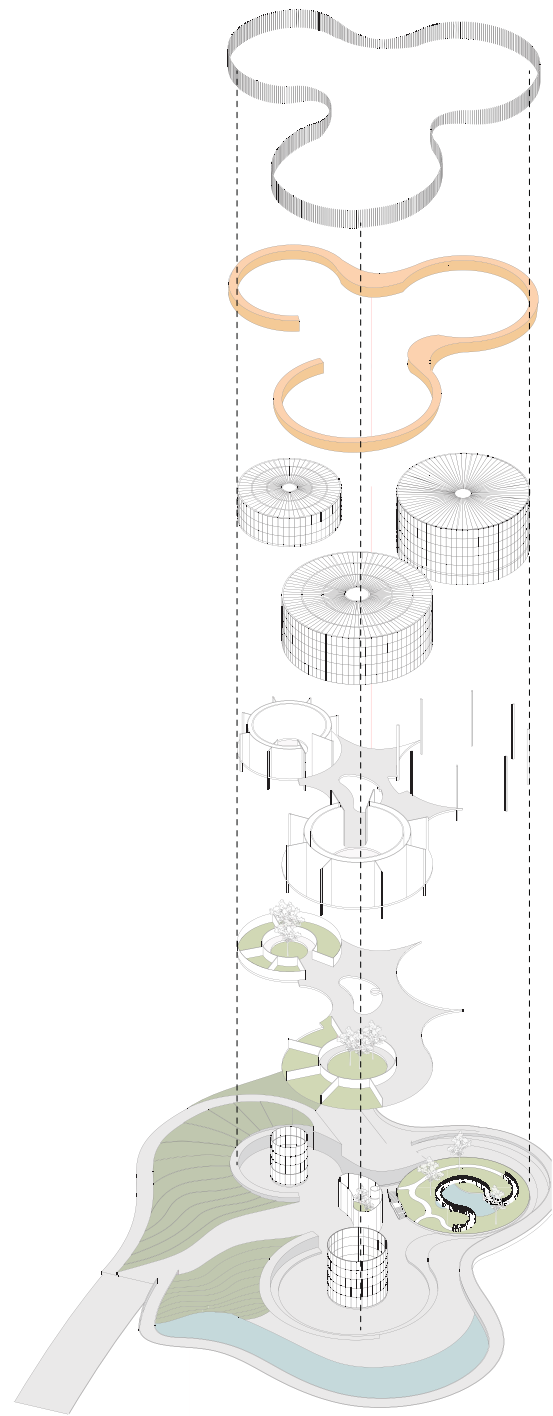
Interior Renders

05

PARK SANCTUARY

Sanctuary for both birds in the aviary and the visitors. Strategy being used are proximity, interwine and transcend. Composed of three earth embedded conical forms that house a diverse range of birds from a variety of ecosystems and climate zones. These cylinders signify the three cornerstones of wellness and offer a multitude of amenities such as research labs, nurseries, learning centers, viewing platforms that are meant to support and enable a healing experience for the feathered inhabitants and visitors. A ribbon-like walkway ties together the forms as it ascends and descends around the cylinders and back to the main lobby where visitors can unwind and destress facilitated by an assortment of comforts such as an affordable spa, cafe, lounge, and gift shop that are crowned with a skylight cut through the center of the site.





Wooden slats around the ribbon walkway to act as an element that ties the programs together

Ribbon-like walkway with lightweight steel frame

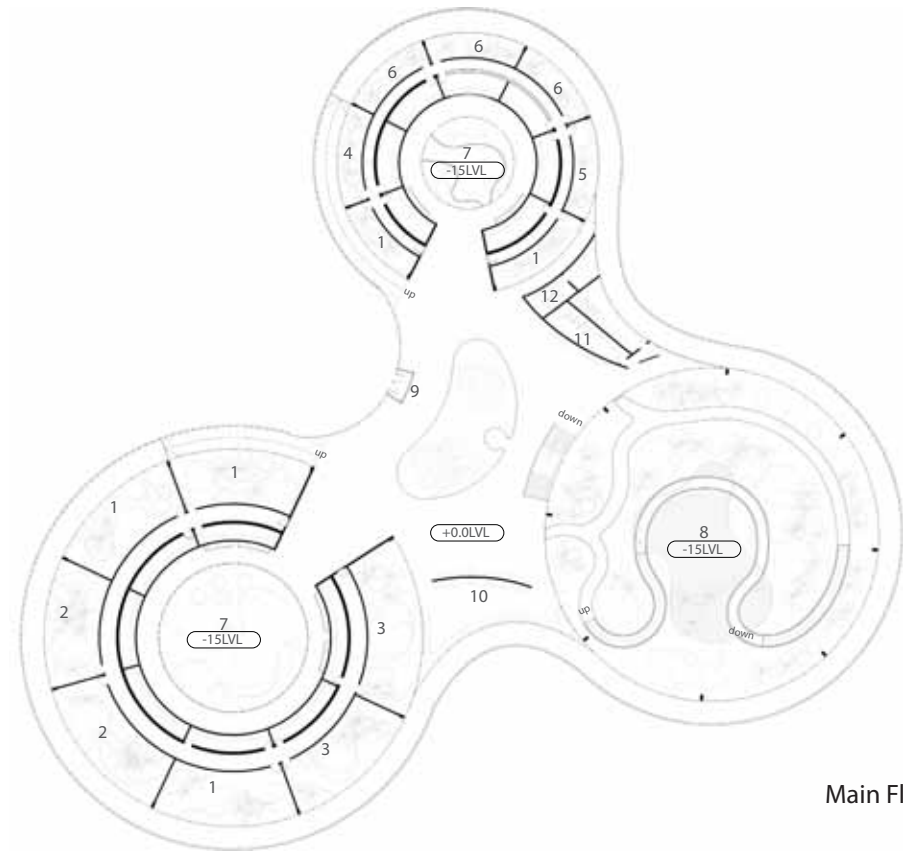
Dynamic Atrium Spaces with high performance fritted bird glass

Biodiverse exhibition spaces supported by steel columns

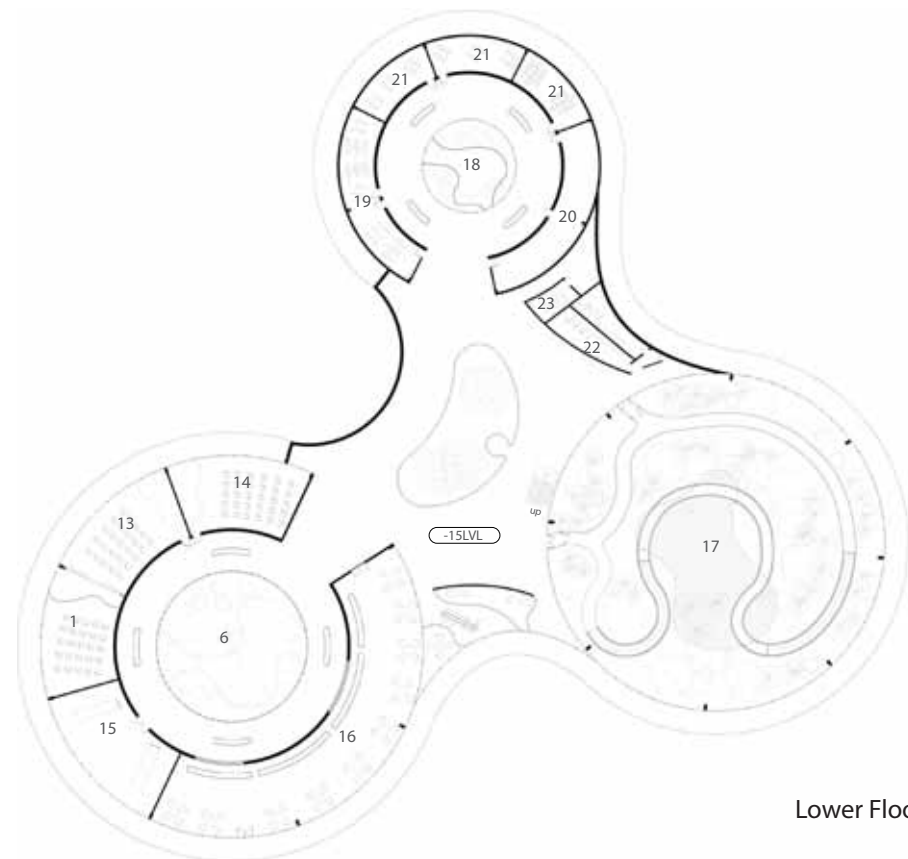
Visitor amenity spaces

Landscape and hardscape space to fit the site's topograph





Main Floor



Lower Floor

Legend:

- 1. Savanna Habitat
- 2. Woodland Habitat
- 3. Forest Habitat
- 4. Beach Habitat
- 5. Wetland Habitat
- 6. Cold Habitat
- 7. Tropical Habitat
- 8. Free Flight
- 9. Lobby
- 10. Exhibition
- 11. Restroom
- 12. Egress Stairs
- 13. Event Space
- 14. Auditorium
- 15. Gift Shop
- 16. Cafe
- 17. Free Flight
- 18. Birds of Prey
- 19. Research Hall
- 20. Utility Room
- 21. Office
- 22. Restroom
- 23. Egress Stairs



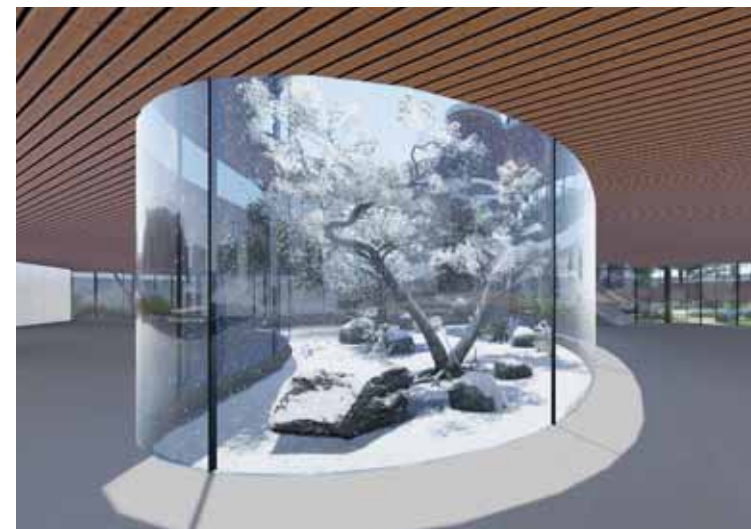
Lobby- Walking towards Tropical/Subtropical Zone



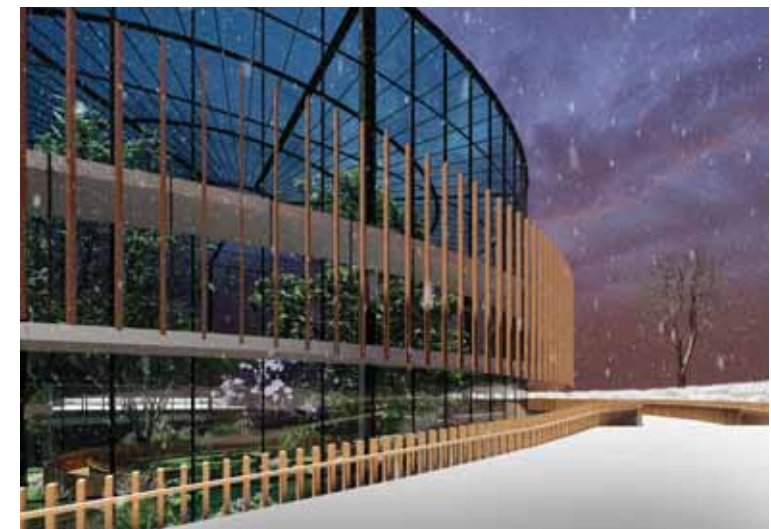
Tropical Habitat



Free Flight Zone



Courtyard at Lower Floor



Outside looking inside Free Flight Zone

06

HUMAN SCALE

Community gardens become a necessity in an urban fabric, where organic food can be locally grown and a green space for community members. We did both projects at the community gardens in Illinois at Englewood and Pilsen. The Hive is a storage shed with an outdoor classroom as well as a hydroponic garden at El Paseo Community Garden. The hexagonal structure of honeycomb was inspired by the langstroth beehive box that the community garden members harvests honey from. The cluster of extruded hexagons serves as table, seating and storage cubbies. Project Access 2.0 consists of elevated planter bed stations that were designed to be ADA accessible for veteran members at Englewood's Veteran Garden. The stations were created by triangular module arrangements to become seats, working space and planter beds. Most recent project is an outdoor platform with seating spaces for Stone Temple Baptist Church's community garden. The stage is for community programs to allow local artist and community members to voice themselves through opinions, stories, music, poetry and for others to learn about the community's heritage. We hope for this space to promote peace and unity by bringing diverse groups together.

More work at www.humanscale.org



The Hive (El Paseo Community Garden)
Pilsen Neighborhood (Built 2020)



Stage (Stone temple Baptist Church)
Lawndale Neighborhood (Built 2019)

Project Access 2.0 (Englewood Veteran Gardens)
Englewood Neighborhood (Built 2018)

THANK
YOU