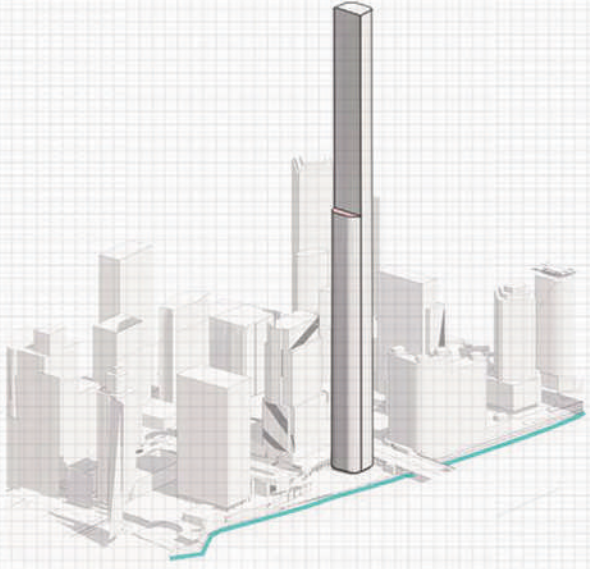


SYNERGY

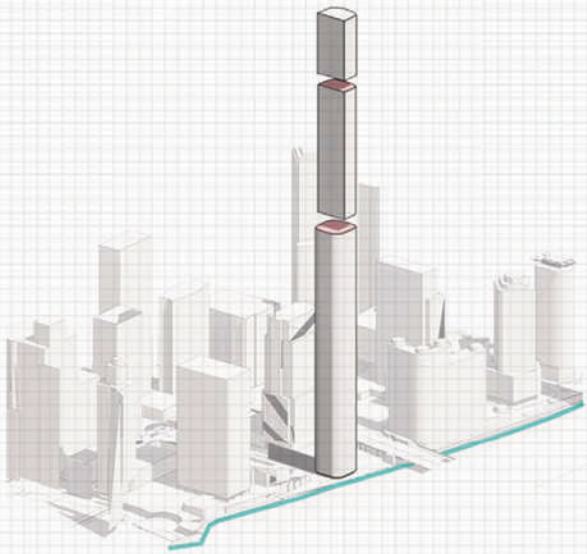
Synergy is a mixed-use high-rise, that combines residential hotels, and retail spaces that aim to make a positive contribution to Chicago's Loop (Central Business District) in terms of iconic significance, urban vitality, and urban infrastructure. The project is designed to explore the relationship of the skyscraper to a complex physical, social and environmental context while engaging issues of detail and construction in expressing architectural ideas and concepts.

CONCEPT DEVELOPMENT

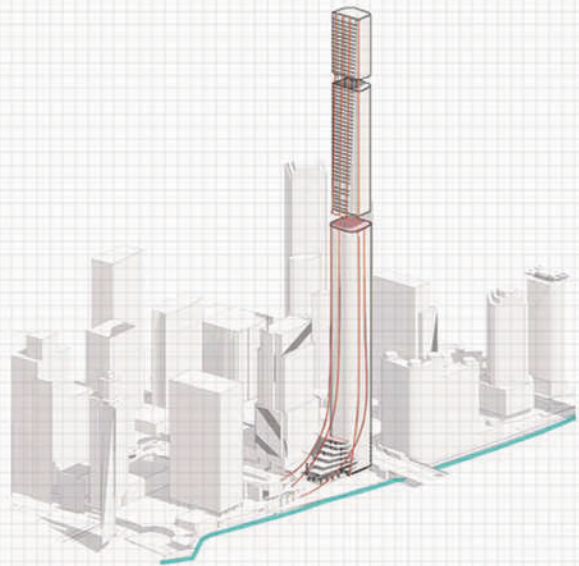
1



2



3



SITE INTEGRATION AT THE PODIUM LEVEL

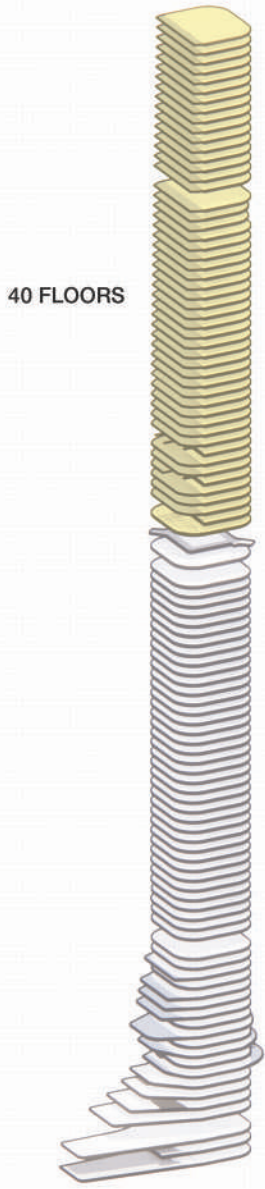
- 1 DROP-OFF POINT FOR THE HOTEL
- 2 PEDESTRIAN ENTRY FOR RESIDENTIAL
- 3 HOTEL LOBBY
- 4 PUBLIC RECREATION
- 5 RIVERWALK PLAZA
- 6 RIVERWALK STAIRS FROM UPPER LEVEL



DESIGNING FOR THE RESIDENTS

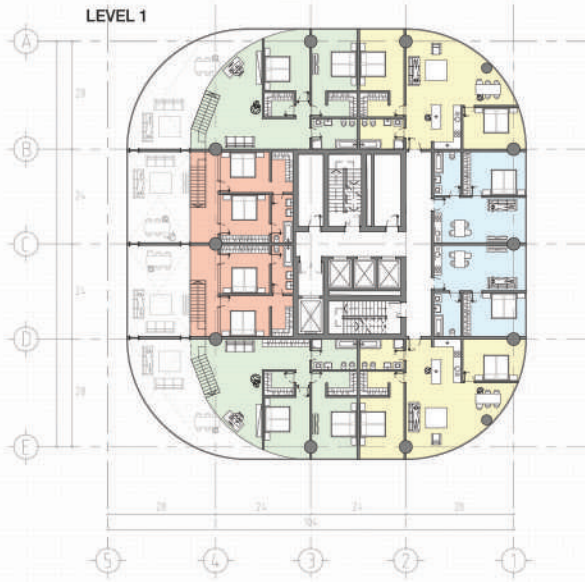
The residential units are majorly duplex units. A total of 40 floors are dedicated to residential function. Combination of one, two and three bedroom apartments along with studio apartments are designed.

The residential units are majorly duplex units. A total of 40 floors are dedicated to residential function. Combinations of one, two and three bedroom apartments along with studio apartments are designed.

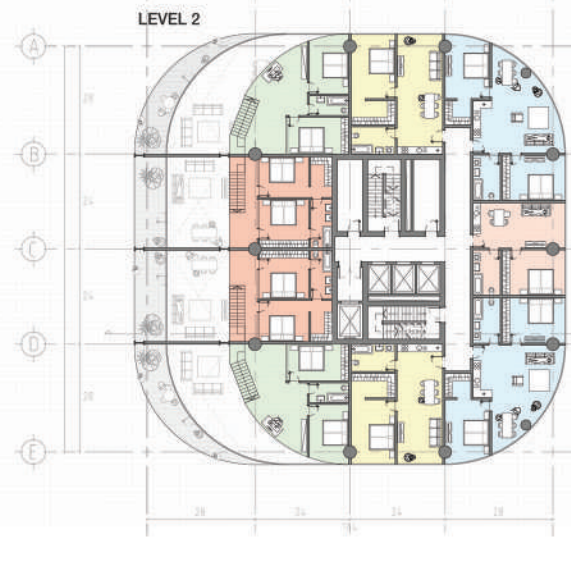
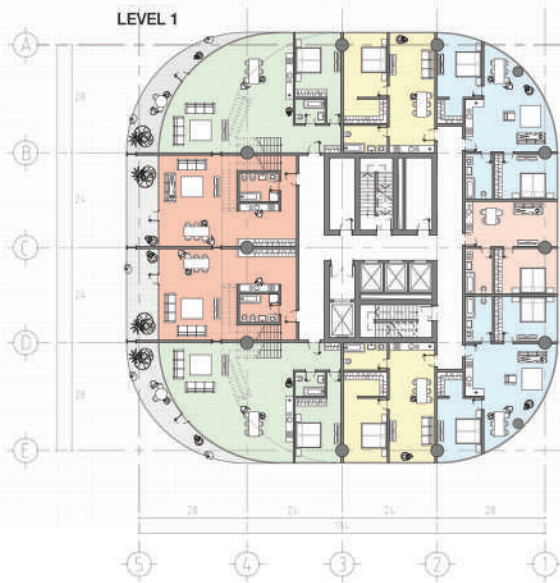


RESIDENTIAL FLOOR PLANS

VERSION 1



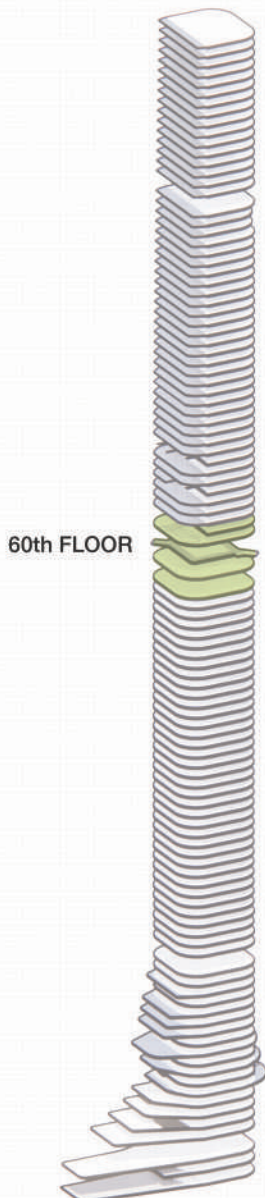
VERSION 2



DESIGNING FOR RECREATION

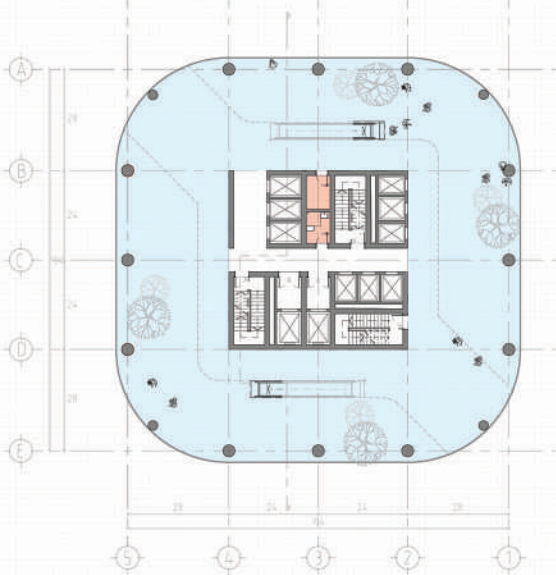
A 2-story amenities floor that creates a buffer between the public and private spaces of the tower. It contains a sky garden that provides recreational opportunities to the users of the building.

A 2-story amenities floor that creates a buffer between the public and private spaces of the high rise. It contains a sky garden that provides recreational opportunities to the users of the building.

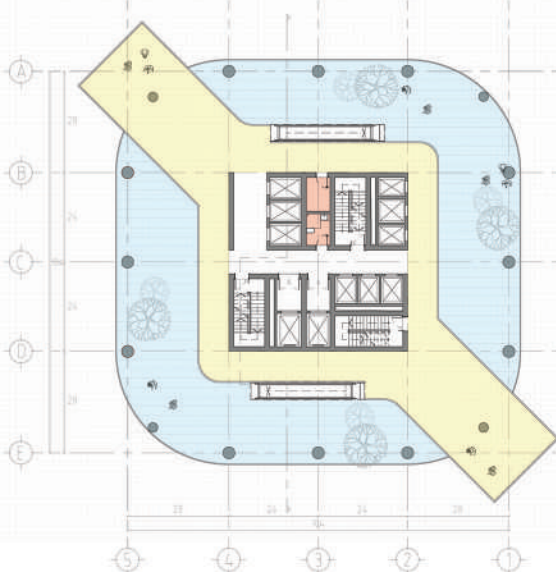


SKYGARDEN FLOOR PLAN

LEVEL 1



LEVEL 2



USER EXPERIENCE

SKYGARDEN VIEW



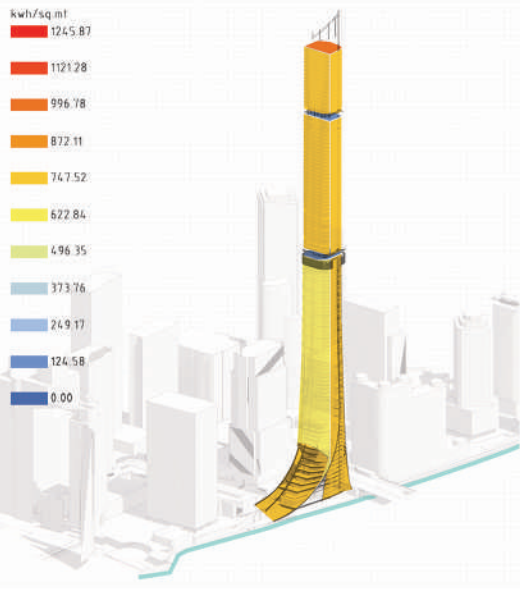
VIEW FROM SKYGARDEN



DESIGNING THE WIND TURBINES FOR HARVESTING ENERGY

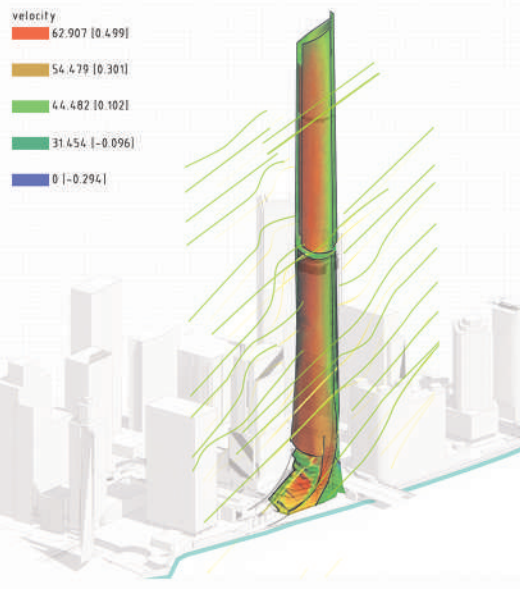
DAYLIGHT SIMULATION

using Ladybug, grasshopper



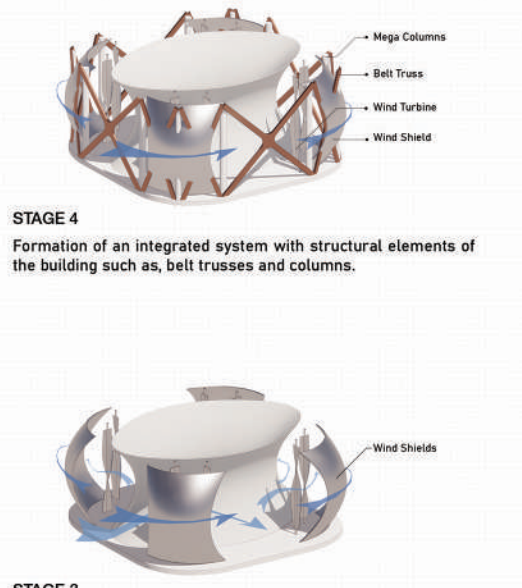
WIND SIMULATION

using flow design

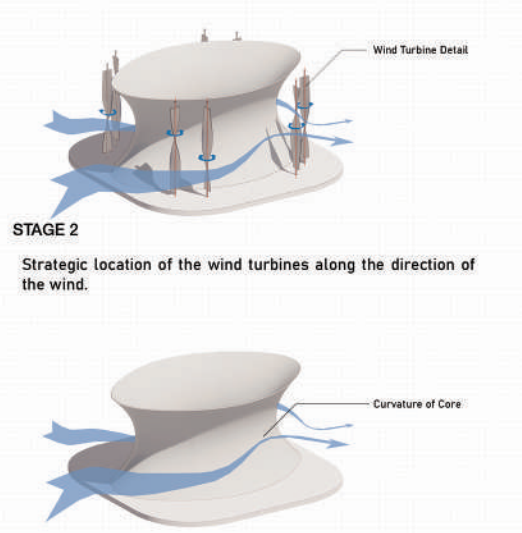


WIND TURBINE DETAIL

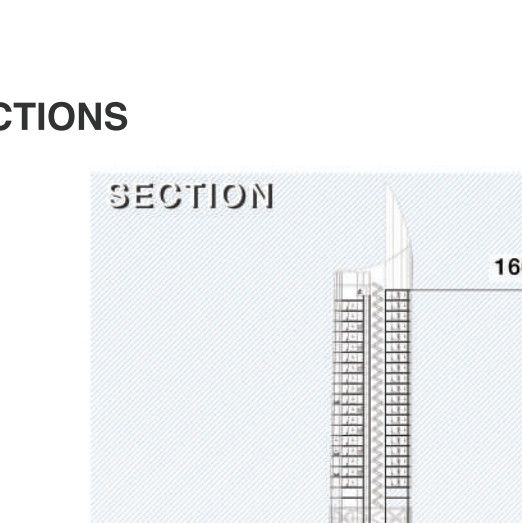
stages of development



STAGE 4
Formation of an integrated system with structural elements of the building such as, belt trusses and columns.



STAGE 2
Strategic location of the wind turbines along the direction of the wind.



STAGE 1
Using a curved wall around the core to pack the services and allow a form that supports the wind movement.

WIND TURBINE FLOOR

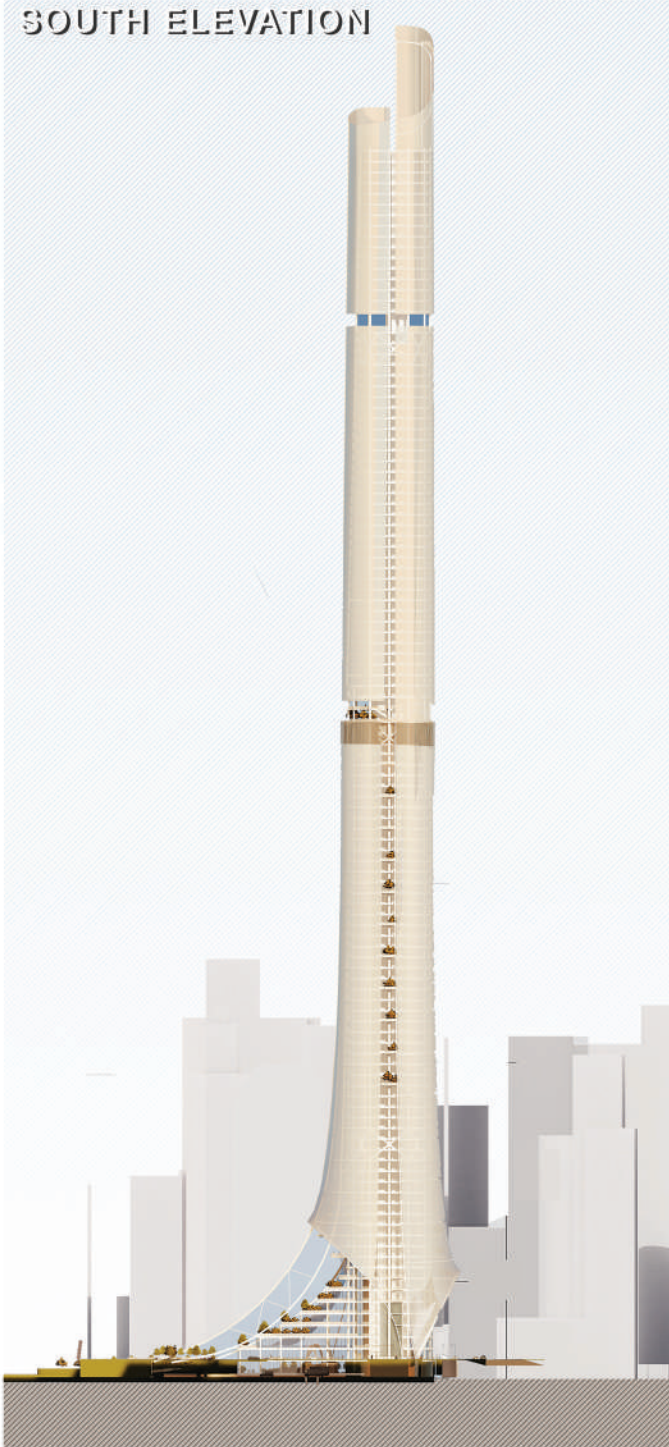


SKYGARDEN OVER-LOOKING THE WIND TURBINES

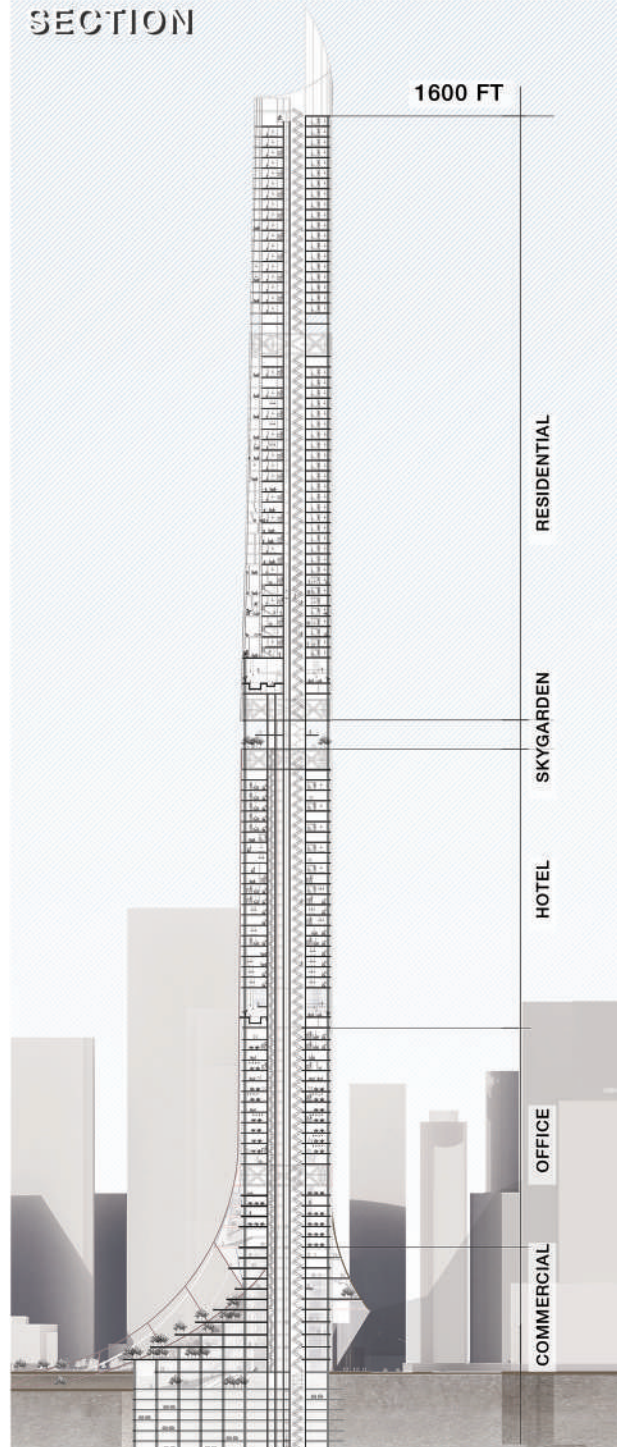


DESIGNING FOR THE VARIOUS FUNCTIONS

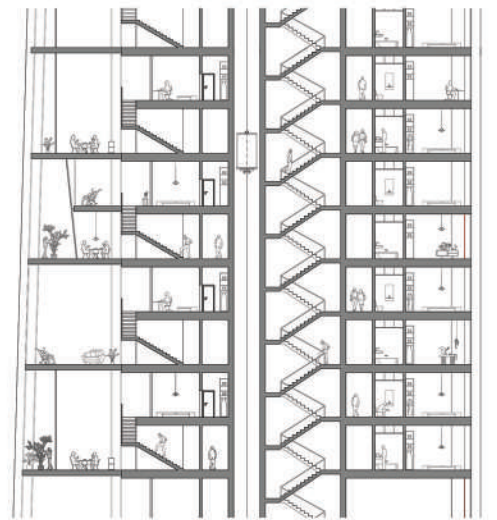
SOUTH ELEVATION



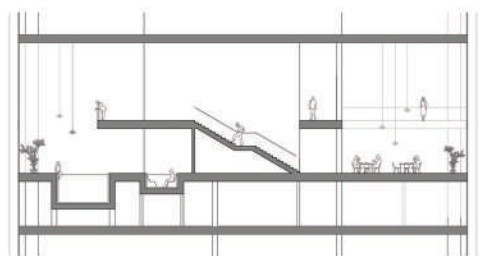
SECTION



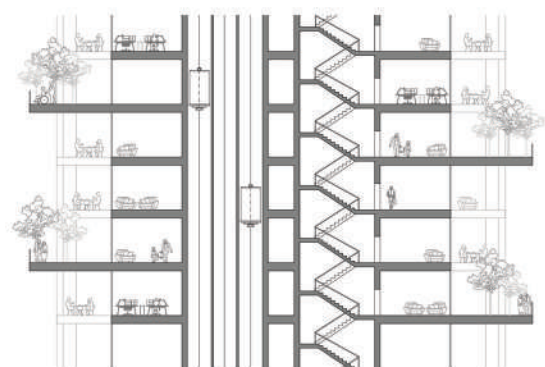
RESIDENTIAL SECTION



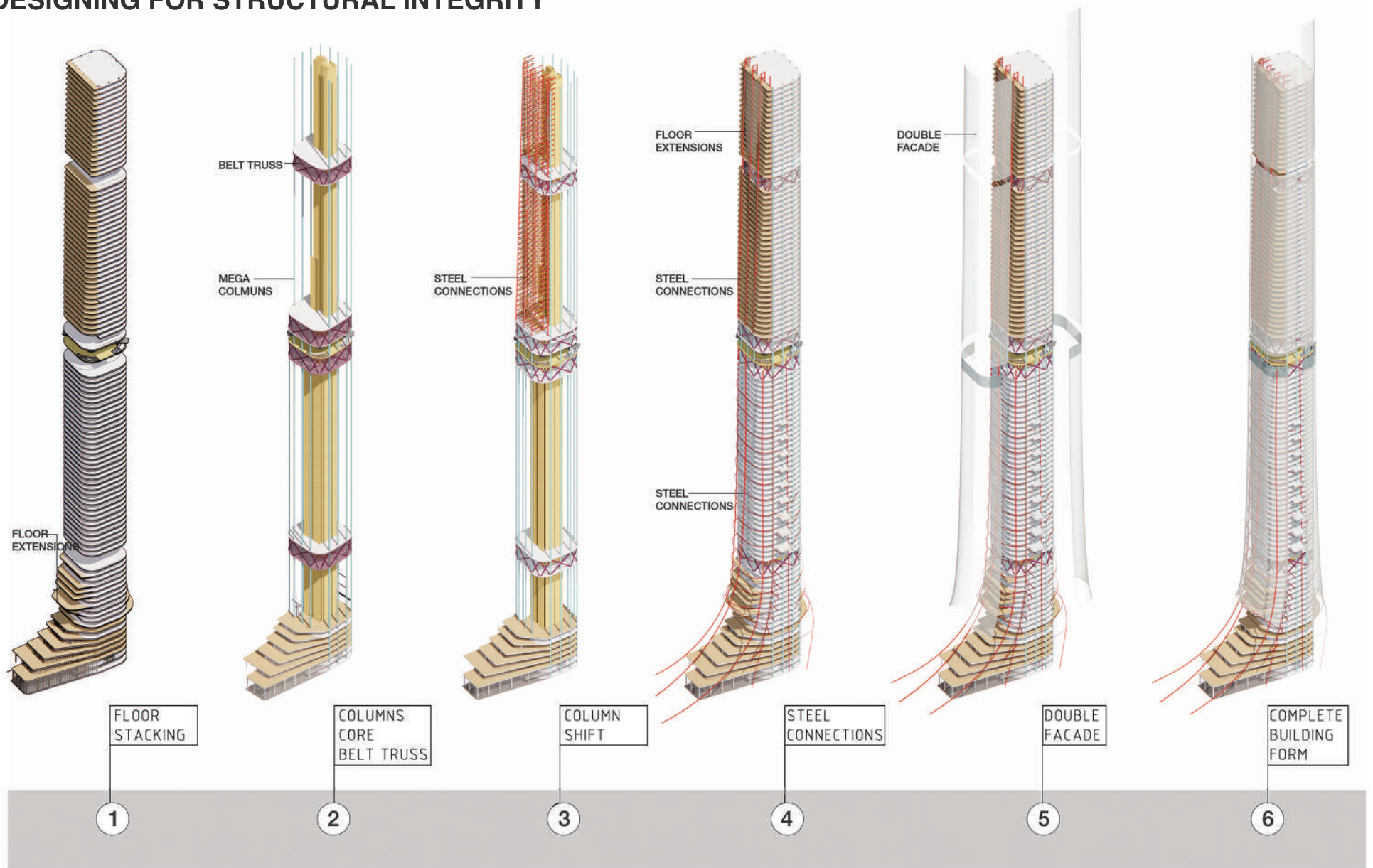
AMENITIES SECTION



OFFICE SECTION

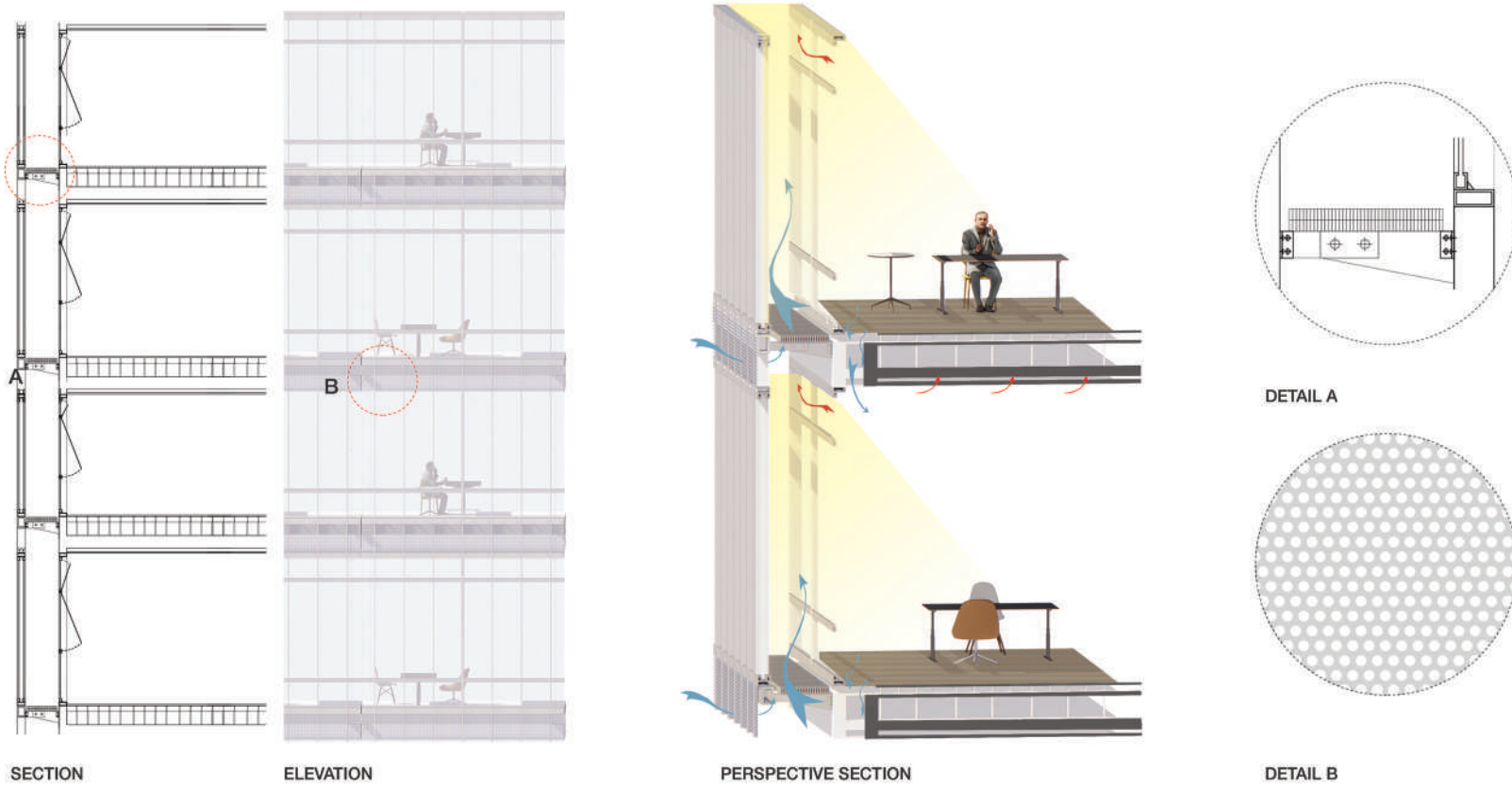


DESIGNING FOR STRUCTURAL INTEGRITY



DESIGNING TO ENSURE SUSTAINABLE BUILT ENVIRONMENT

CURTAIN WALL 01



CURTAIN WALL 02

