

**POO**

**ART**

**FOO**

**LLIO.**





# „ESSENTIAL HOMES“

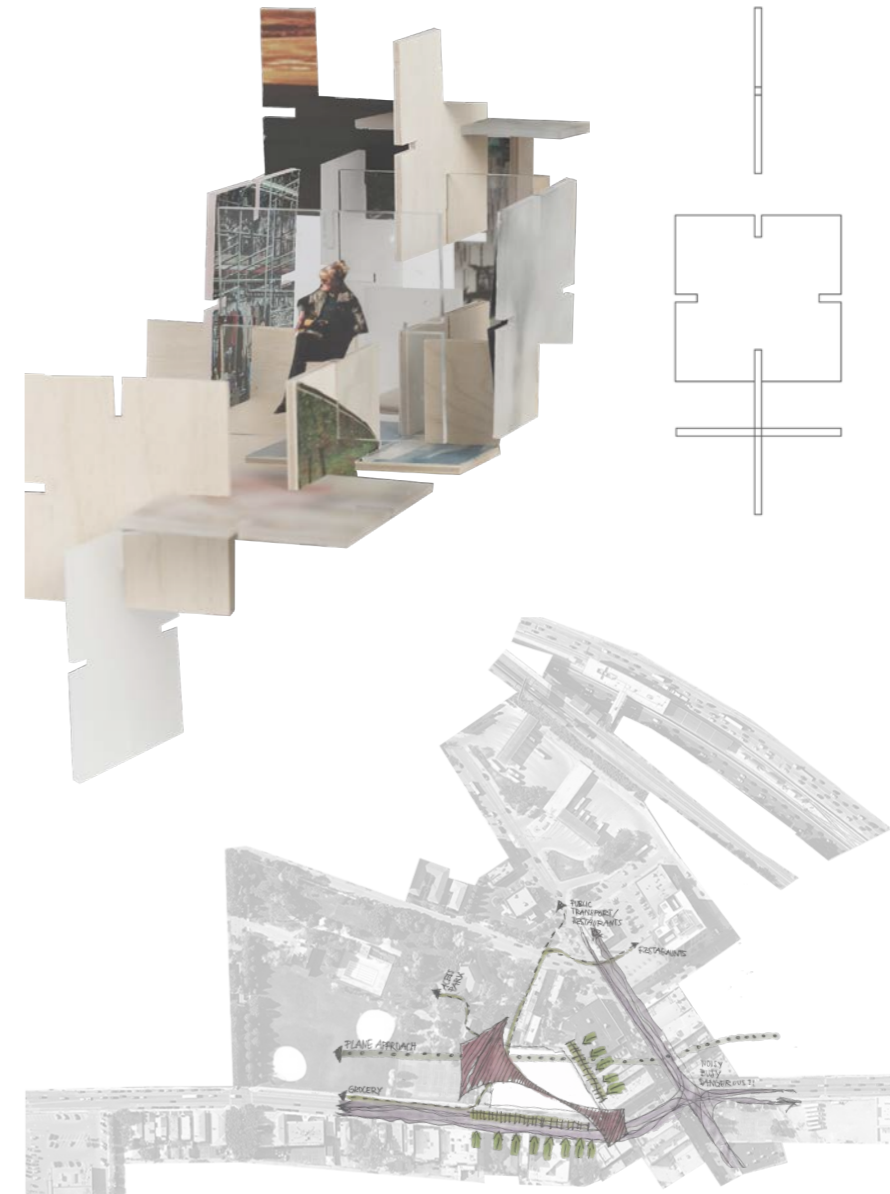
A Vertical Neighborhood in Jefferson Park

Essential Homes is an attempt to activate the community to serve as a magnet for the neighborhood. Instead of building an object, this vertical neighborhood creates a holistic collection of shared spaces, which allow intimate moments.

The tower reaches out to the neighborhood by receding itself through the successive repetition of transparent, opaque and solid surfaces, which creates opportunities in relationship to its exterior.

## Big Rough Idea

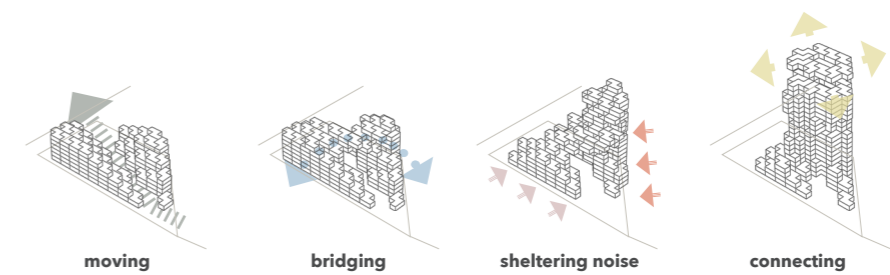
Based on a simple puzzle piece module, this project started as an interactive collage to create different layers through which people are „engaged“.



Site Analysis

## Massing

Formed by the context and influenced by its inhabitants, the big rough idea evolved into a complex collection of modules. Arranged on a 27x27 feet grid, the „z-shapes“ serve as a mathematical tool to organize the program and break down the mass.



**4th Floor  
Community Center**

The day care center creates an interesting environment for children and seniors to interact with one another. An open floor plan allows great flexibility and increases possibilities of engagement between people.



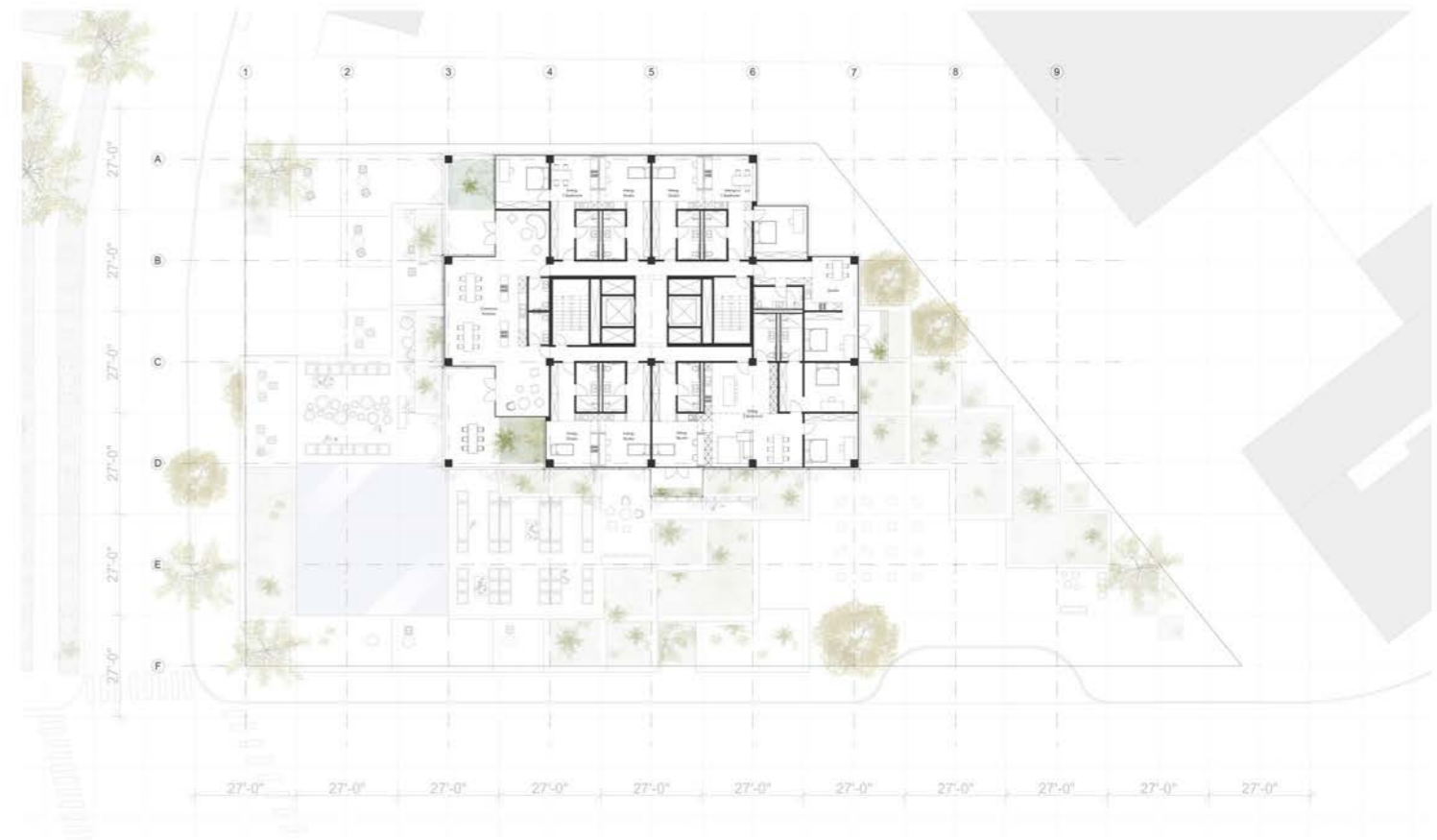
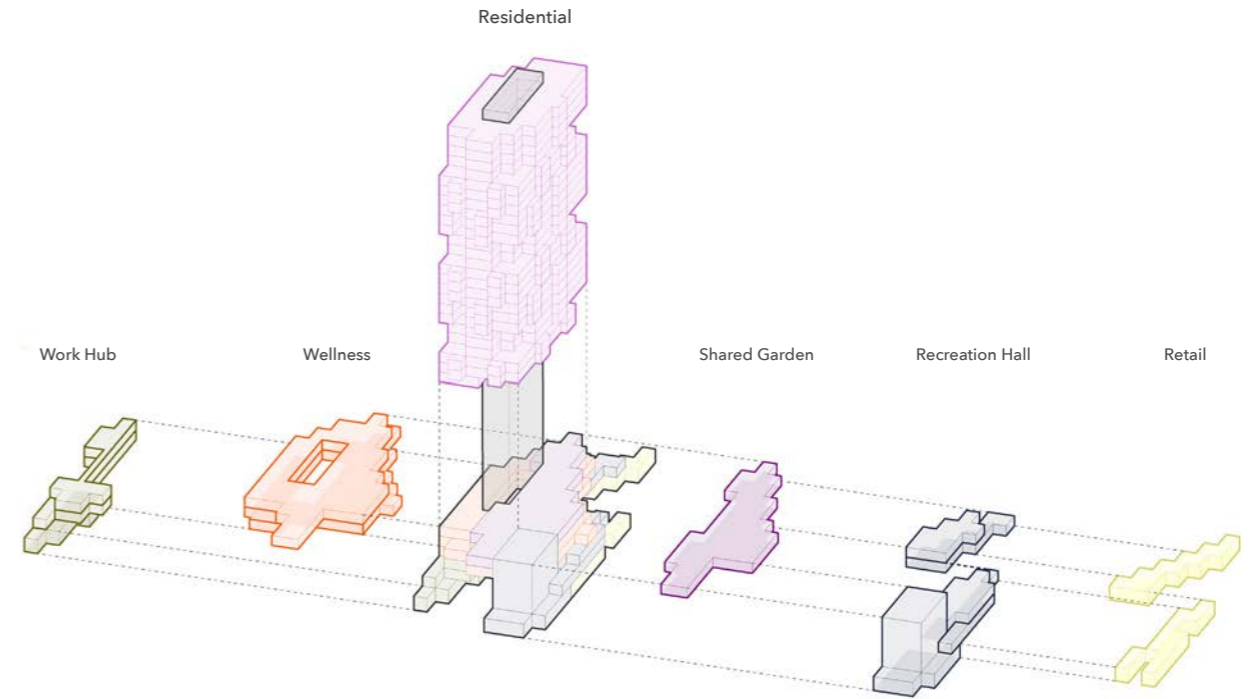
**2nd Floor  
Community Center**



**Ground Floor  
Community Center**



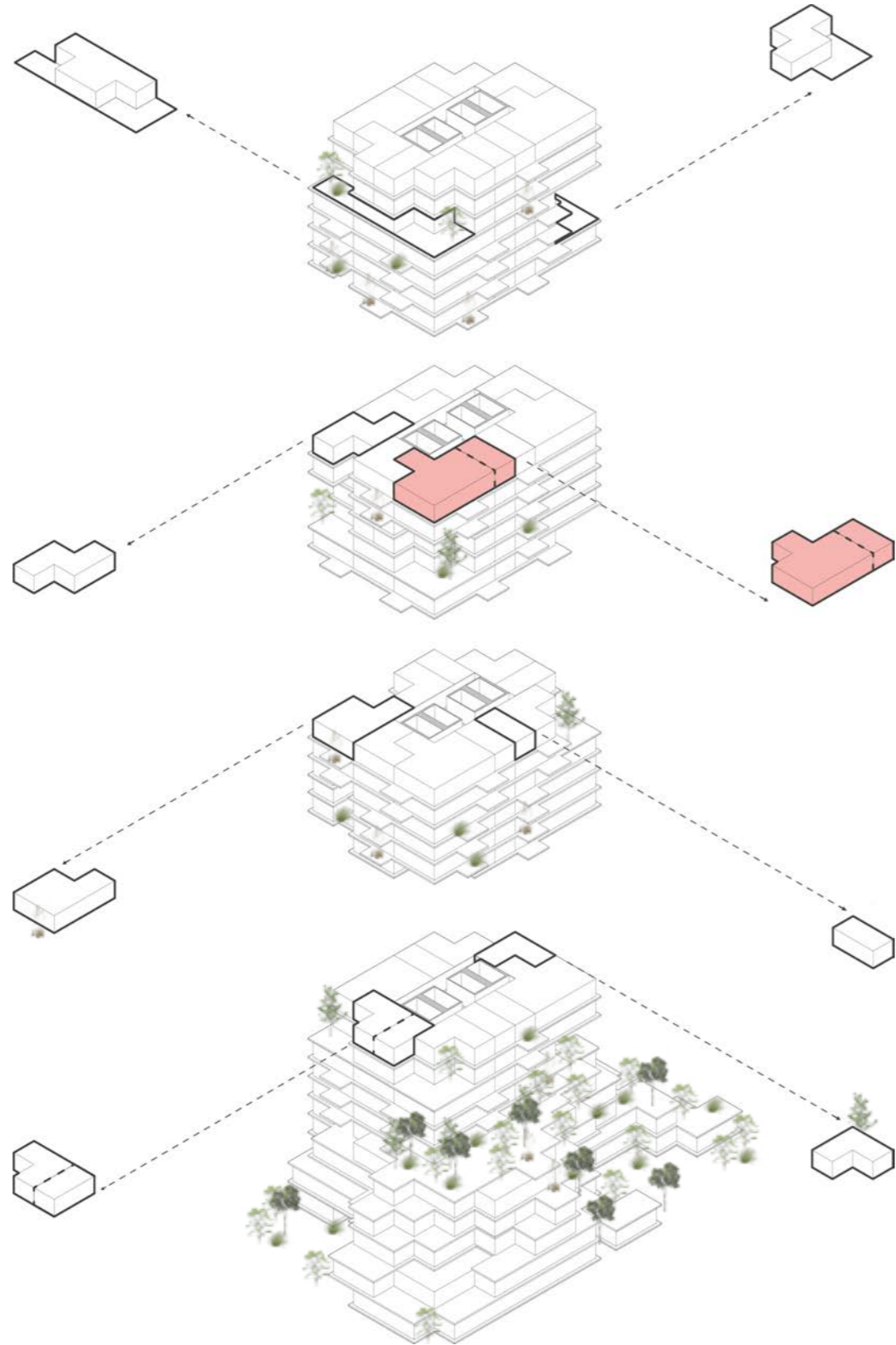
**Program**



**21st Floor  
Residential Tower**



„Gabi’s cookies, cuddles with Sam, Roberto’s story telling, Perry and Jenna’s dances, Brad’s and Julie’s famous polish sausage. The **community areas offer all the space** we need to act as our **own vertical neighborhood**. The opportunity to gather three floors in one room is unique and inspiring.“

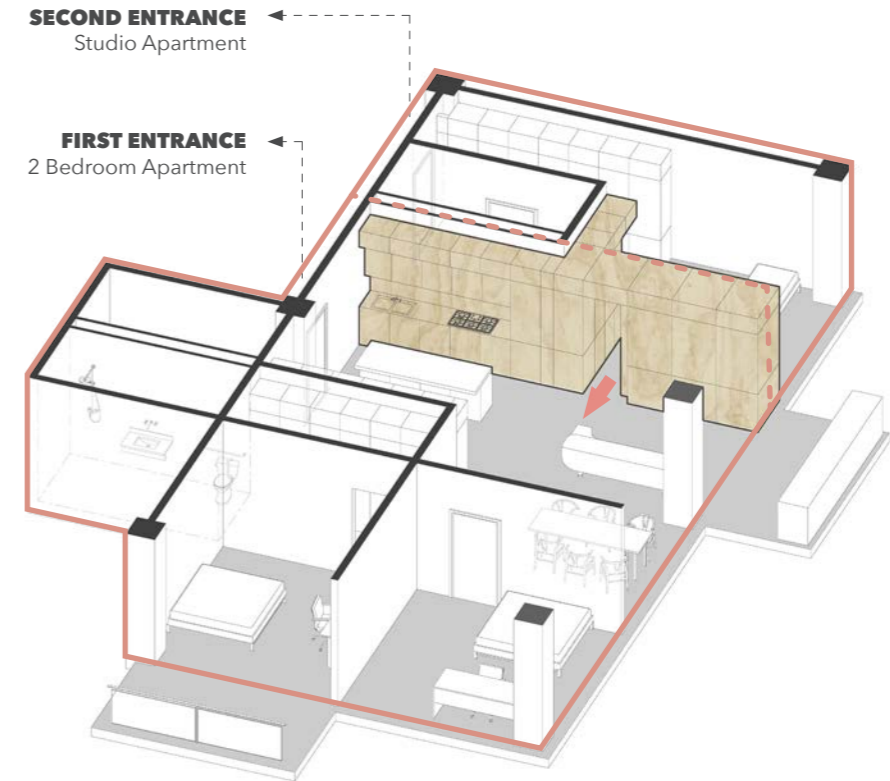


„This Studio is small, but it is **perfect for my budget**. The inspiring stories of the elderly are helping me whenever I feel stuck in my writing.“

„Brad and I immigrated in 1965. Since then we live in Jefferson Park, but **without our family from Poland** we always felt lonely. Pascal is a sunshine.“



„I grew up with Sam, but he has grown an old dog. My job at the airport keeps me busy, so I am thankful that **Mary and Beth take care of him** through the day“

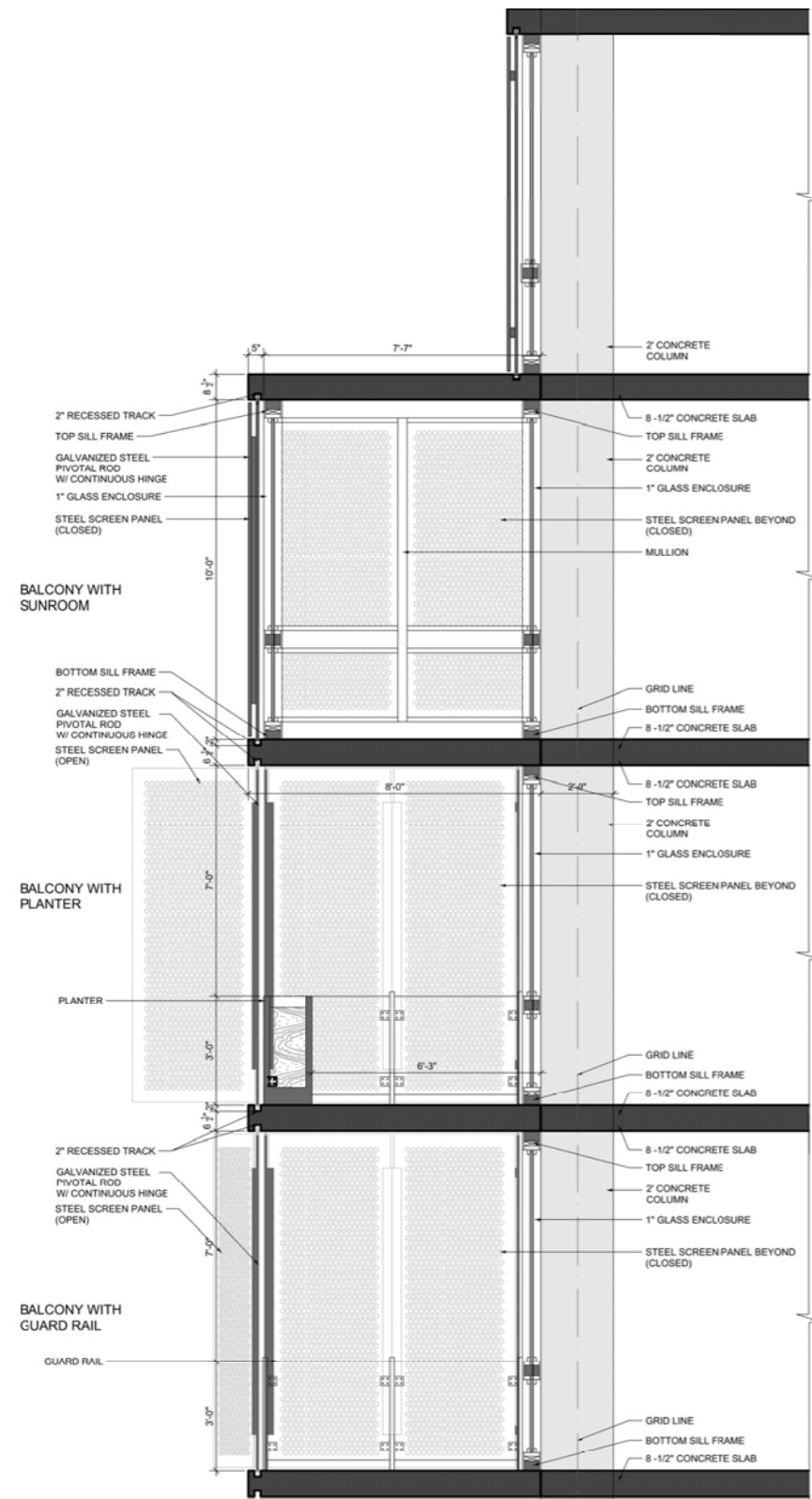


**Intergenerational Living**  
Connecting walls between some individual apartments were identified as shared walls, and thus designed to be modified and opened into intergenerational units. The possibility of interlocking homes creates a flexible shared space which supports the idea of engagement between the residents.



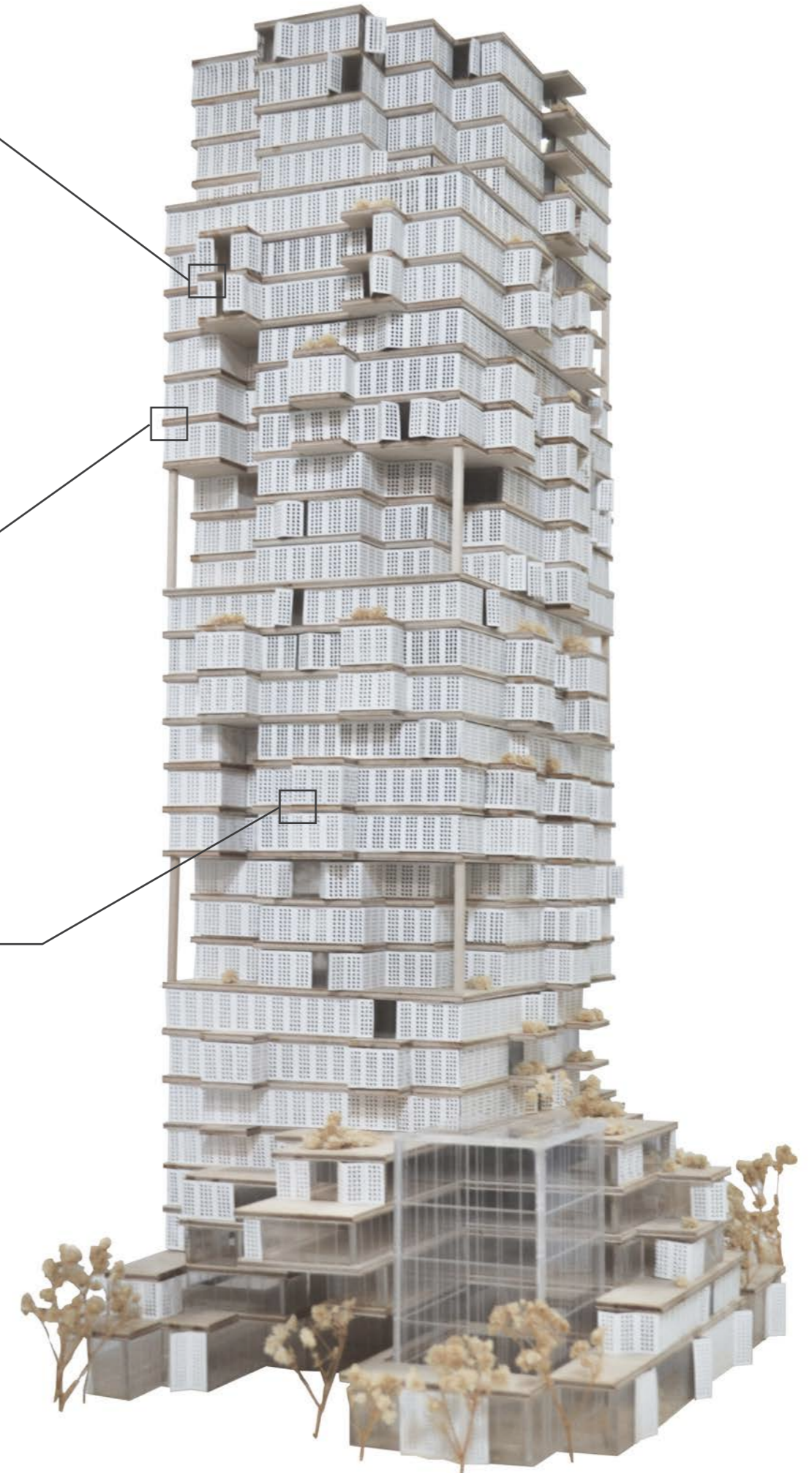
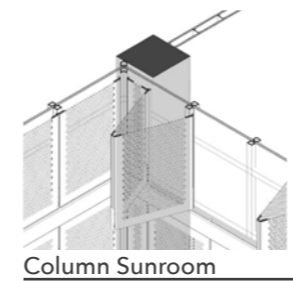
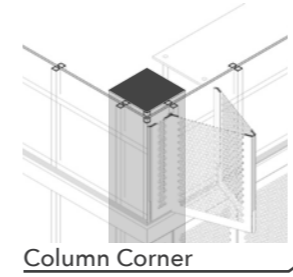
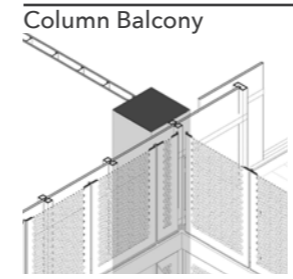
„Mary and I are friends for 56 years now. We love **visiting the park with Sam**. Being part of this community is amazing, especially Sarah who helps us daily.“





**Multi-functional Panel**

The bi-folding screen panels are placed in the south and west facade to reduce heat gain in the summer, and increase passive solar heating in the winter.



Model 1/16"-1'0"





Mission

„Essentials Homes“  
nourishes a foundation  
to channel the essential  
moments of life.





# “HEY BUDDY”

A Transitional Housing Project in Lincoln Park

“The condition of not having a home” is the common definition of homelessness. But what do we mean by a home? - A roof over one’s head, belonging to a family, or the love of a partner - a feeling of having or missing a home can take many forms. This Transitional Housing Project in

Lincoln Park offers people a secure living space alongside the opportunity to participate in an interactive dog day care program. “Hey Buddy” is the phrase used to describe the building of a new relationship with your neighbor’s dog, and becoming part of a new home.

## Halsted Street

Halsted connects the North of Chicago to the South. As one of the main connections this street is a highly prioritized transit route.



OLD MEN GREET ME  
CAR STOP AND GO  
DOG CROSSES  
CAR STOP AND GO  
TWO DOG ARE CROSSING (WITHOUT SHOES)  
CAR STOP AND GO  
TWO WOMEN WITH COFFE ARE CROSSING  
CAR STOP AND GO  
CAR STOP AND GO  
CAR STOP AND GO

DOG CROSSES  
WOMEN ON BIKE CROSSES  
CAR STOP AND GO  
CAR STOP AND GO  
8 HALSTED  
CAR HONKS  
MEN WITH THREE DOGS CROSSES  
CAR STOP AND GO  
CAR STOP AND GO  
CAR STOP AND GO  
OLD MEN LEAVES



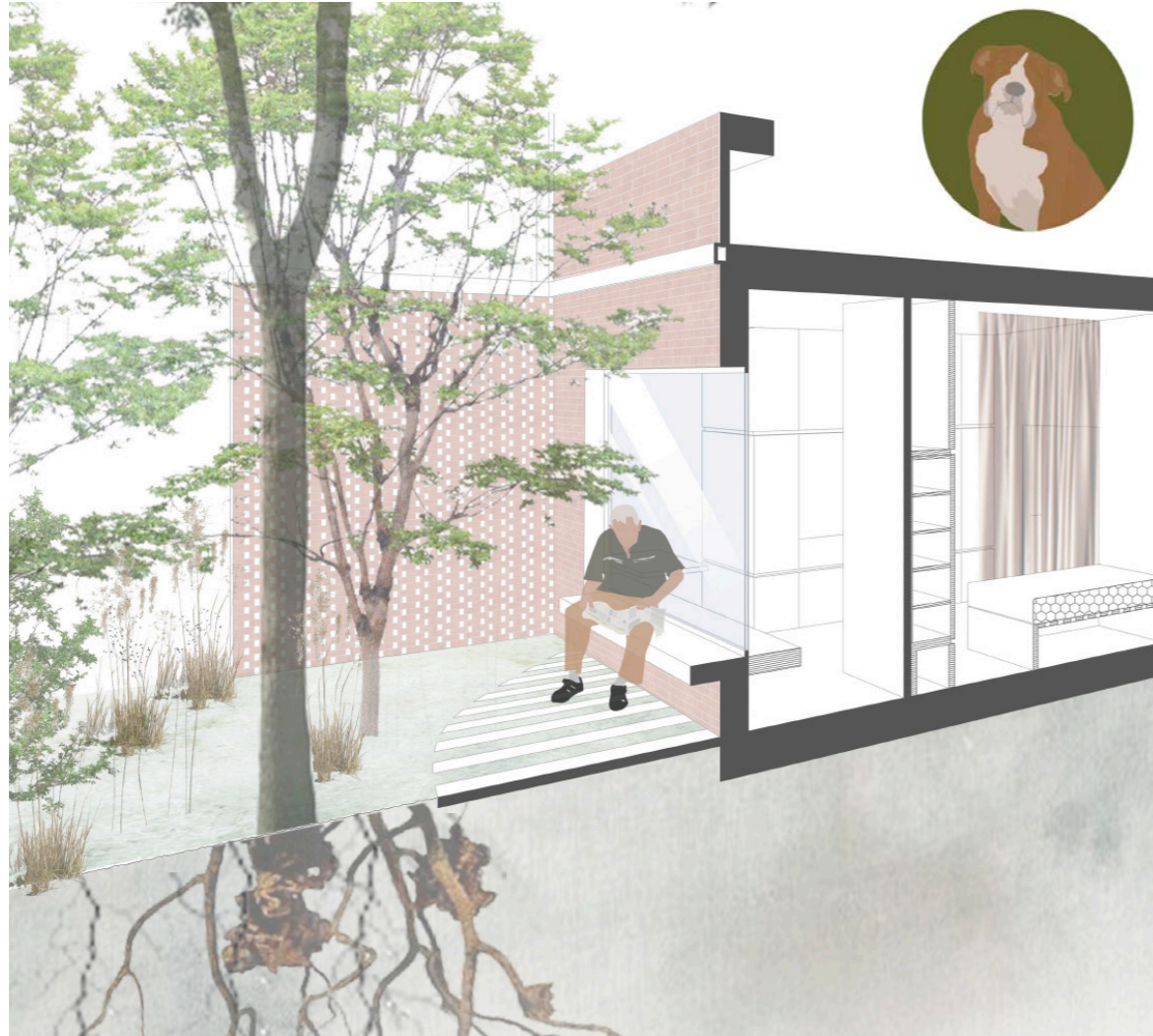
## Halsted and Dickens

2020 Dickens Ave. was among the city’s streets closed to auto traffic during the pandemic. The idea was to give residents more space to counteract the strict corona-policy. Dickens Ave maintains steady pedestrian traffic due to its connection to Oz Park and thus fosters enormous potential as a central hub.



**Joe**

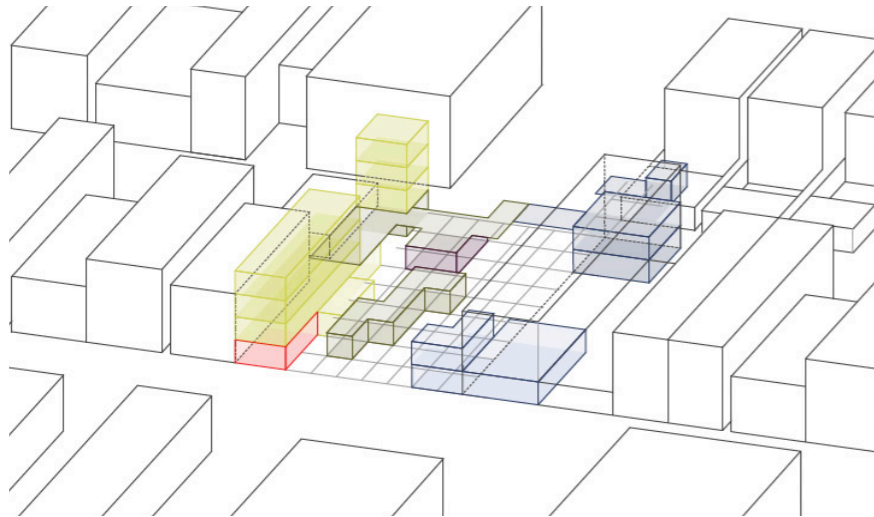
56 years old - Joe's morning routine starts with a glance at the newspaper. Feeling lonely in his old house since the loss of his wife, he decided to become a temporary member of the "Hey Buddy" community. He enjoys his ritual time with Lilly every Tuesday and Thursday.



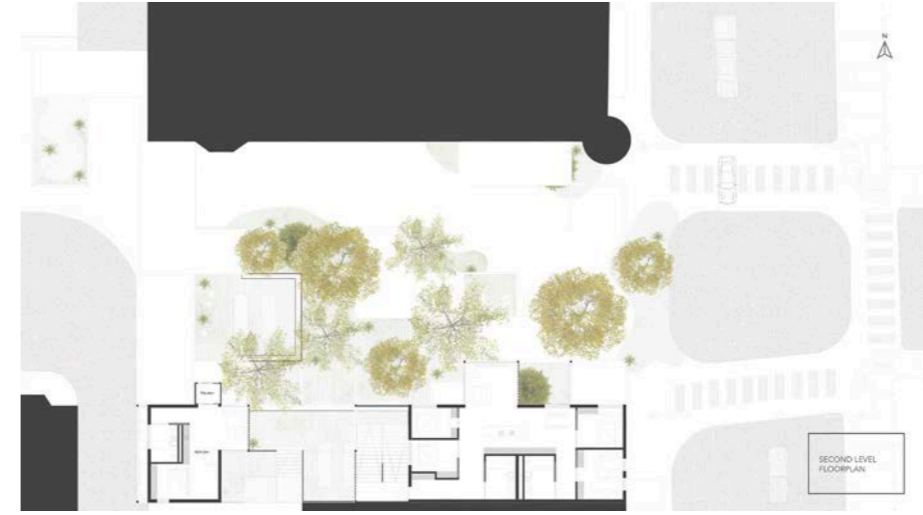
**Lilly**

- 2132 N Fremont St. Since her owners both work full time Lilly enjoys resting in the garden with Joe twice a week.

**Program**



- TRANSITIONAL HOUSING
- CO-LIVING SPACE
- DOG DAY CARE
- ADMINISTRATION AND TRAUMA CENTER
- LIBRARY AND CAFE
- WORKSHOPSPACE



**3rd Floor**

Intergenerational and ADA approved apartments offer individual spaces for their inhabitants.



**1st Floor**

The semi-public garden bridges the whole street and connects one facade front with another.



**Ground Floor**

Co-living spaces are reaching out into the public space of the street and define the path of circulation new.





**"pedestrian first"**  
remodeling of the crossing

**"transitional housing"**  
temporary housing in  
single/shared units

**"super-structure"**  
interactive playground  
for human and dog

**"easy access"**  
elevator to  
ADA Units and  
community garden

**"I got it from my garden"**  
low and raised  
gardening beds

**"co-living space"**  
common spaces for  
gathering, cooking, reading  
and playing games

**"Hey Buddy!"**  
dog day care with  
interactive playground for  
human and dog





# „MAIN STREAM“

The City's Traffic as an Abstract Perception

Movement and liveliness are inherent to Tokyo, as it is the largest of the world's metropolises. In order to navigate its rich expanse and reach urban resources, citizens regularly engage with the transit systems, often experiencing and becoming a part of fast-paced rush hours. Metro and subway entrances/exits can thus be understood as foci of congestion and haste.

The cabin slides into a chosen station's pre-existing infrastructure, between the roof slab and the railing wall; these features are present at most stations. It allows to overlook the descending staircase below, through which the transit traffic ascends and descends; this motion is abstracted, as vision is blurred, and appears as a current.

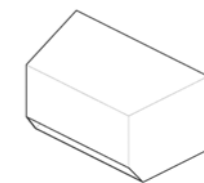
## „Meditating“

As people move, water flows. As one meditates, they rest above the current, reflecting.



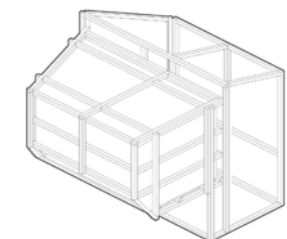
## Ikebukuro Station

Light is filtered, sound is softened, and vision is abstracted. Here, individuals store their belongings, shedding material weight.



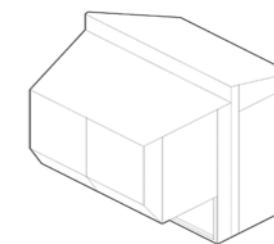
## „Box“

wood materiality, private environment, opening for „reflection“



## „Frame“

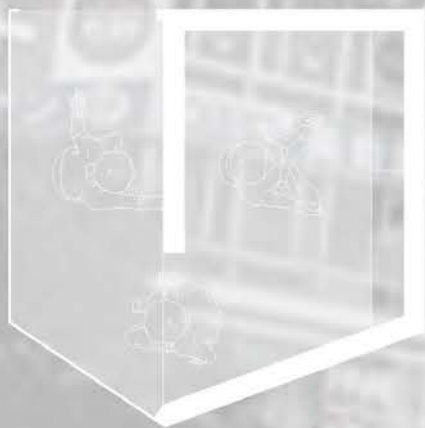
simple wood structure, encloses box, creates double layer to make space for insulation



## „Skin“

light-diffusion, varying opacities, lightweight, weather resistance, no attachment needed





**5. Back to Reality**  
grabbing belongings,  
opening door,  
intake of light and  
sound,  
leaving the cabin

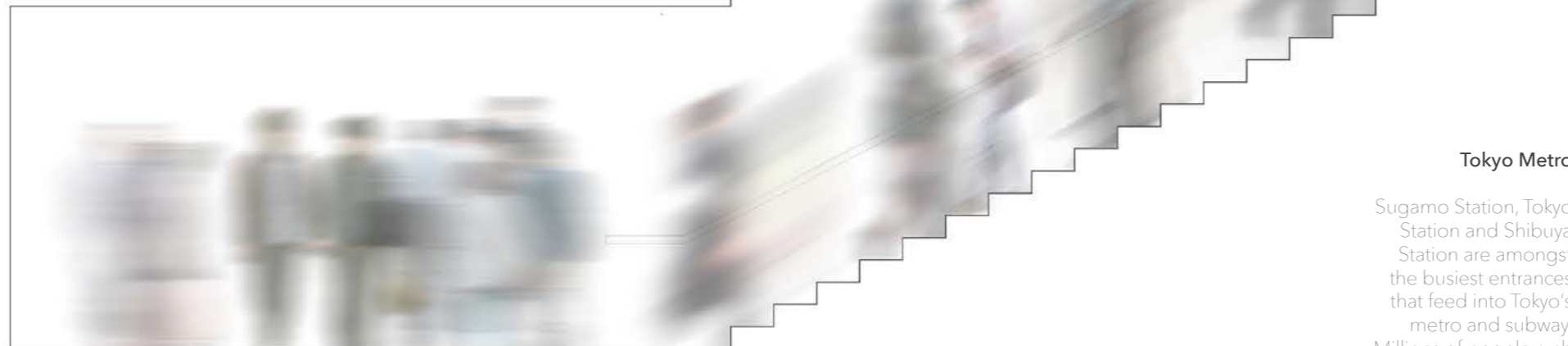
**4. Reintroduction**  
down lifting,  
change of body  
movement,  
white light and noise

**3. Meditation**  
abstract perception,  
water stream,  
creating safe zone



**2. Introduction**  
uplifting,  
change of body  
movement,  
ground faced,  
filtering noise and  
sound

**1. Wet Zone**  
entering the cabin,  
preparing for  
meditation,  
storing belongings/  
valuables



**Tokyo Metro**

Sugamo Station, Tokyo Station and Shibuya Station are amongst the busiest entrances that feed into Tokyo's metro and subway. Millions of people rush in and out daily, up and down the stairs and into the tunnels. This experience is an essential component of Tokyo's quotidian.

